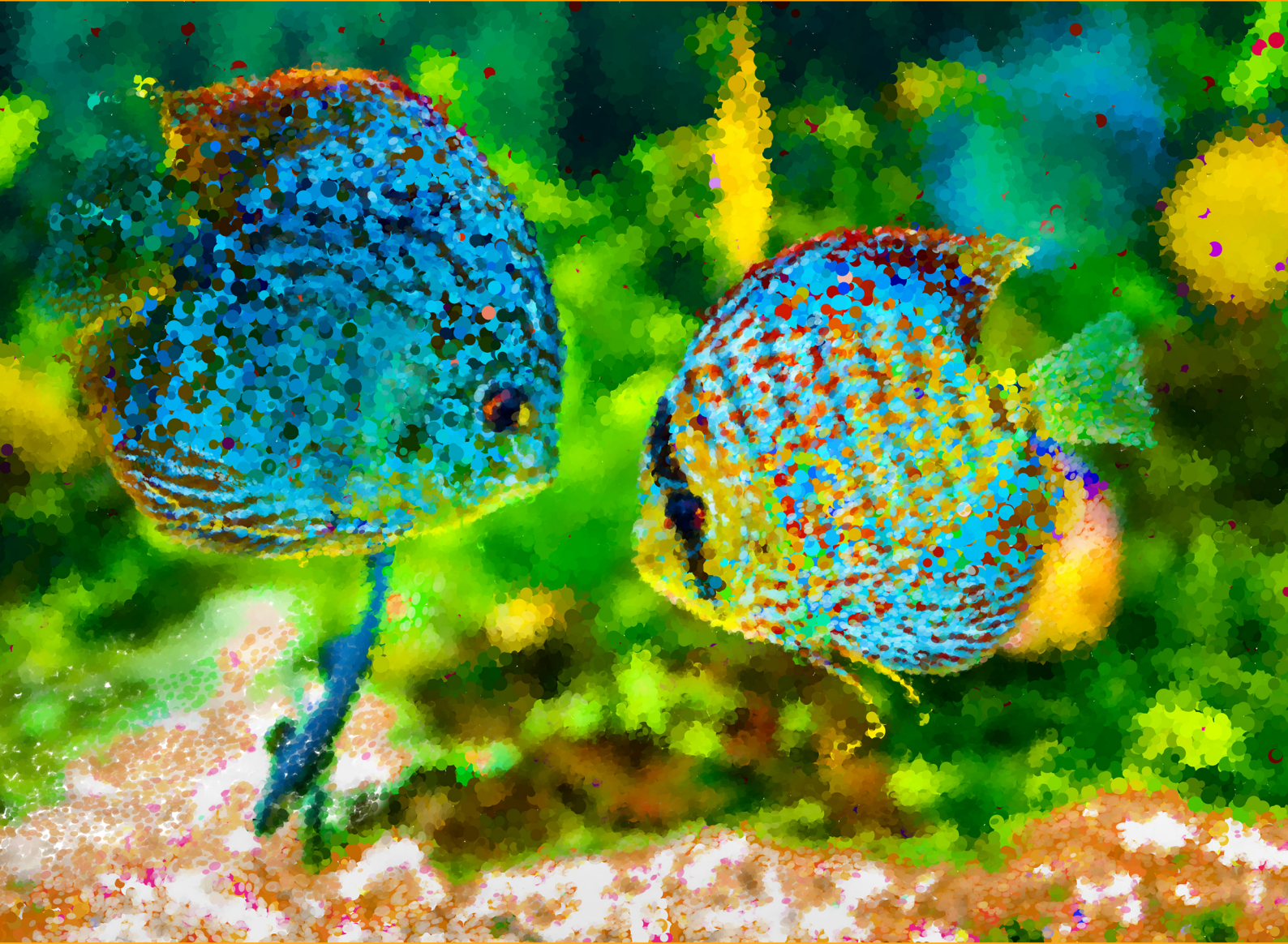




Points

Pointillism Effect



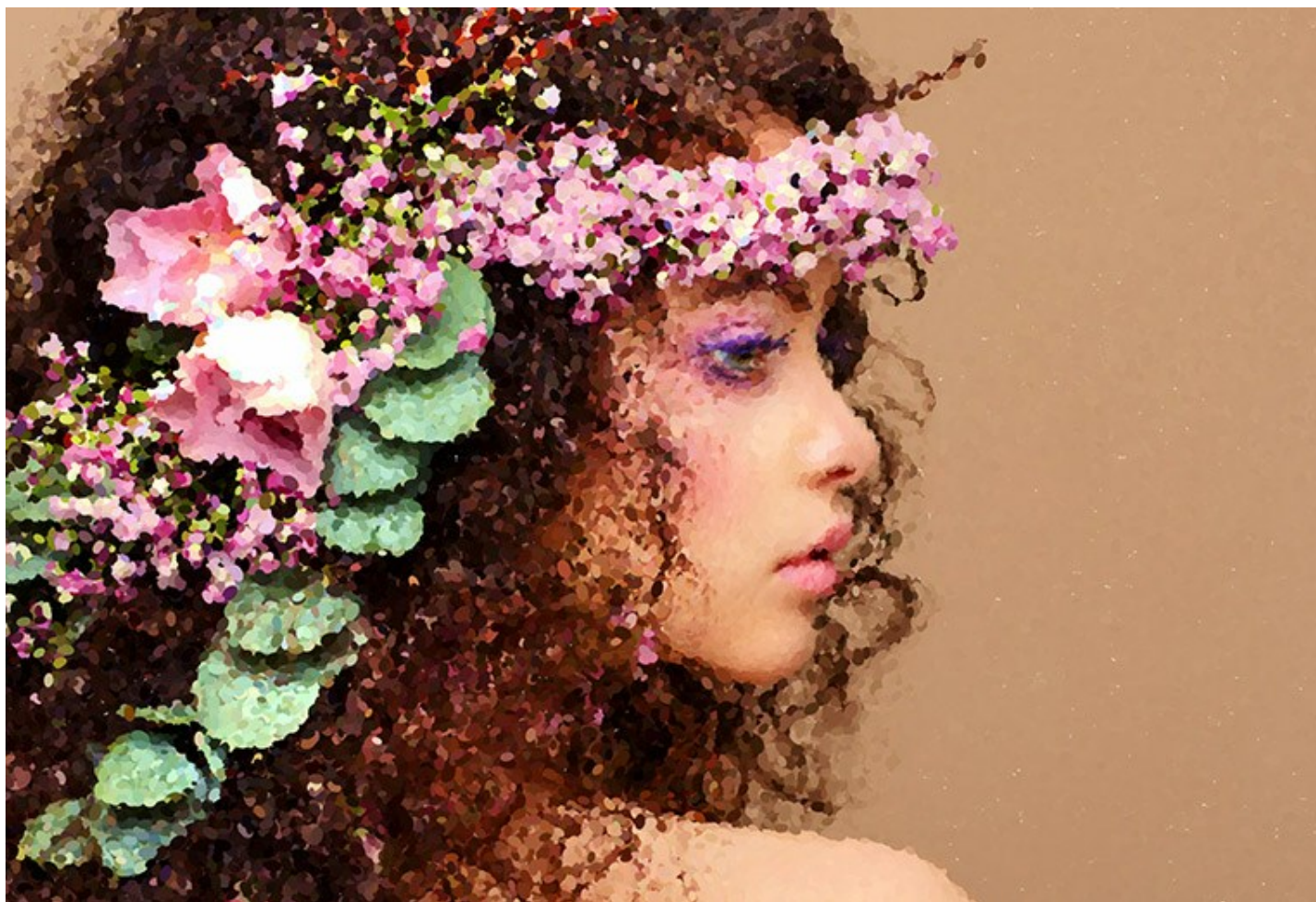
CONTENTS

- Field of Application
- Installation on Windows
- Installation on Mac
- Activation
- License Comparison
- Workspace
- Using the Program
- Pointillism Effect
- Timeline
- Toolbar
- Canvas
- Frames
- Text
- Presets
- Preferences
- Batch Processing
- Print Image
- Sunny Morning Landscape
- Beautiful Bride in the Autumn Park
- AKVIS Programs

APPLY POINTILLISM EFFECT TO YOUR PHOTOS

AKVIS Points lets you transform your photos into paintings using the technique of pointillism.

Pointillism is a painting technique characterized by applying of separate brush strokes in the form of dots or spots. This style is an offshoot of Impressionism. A complex hue is decomposed into individual colors, which are displayed on the canvas as dotted strokes, small dabs of paint of pure color. The optical mixing of these dots gives us the visual perception of an entire painting.



This is exactly how a computer screen represents images: the pixels are like the dots in pointillist paintings.

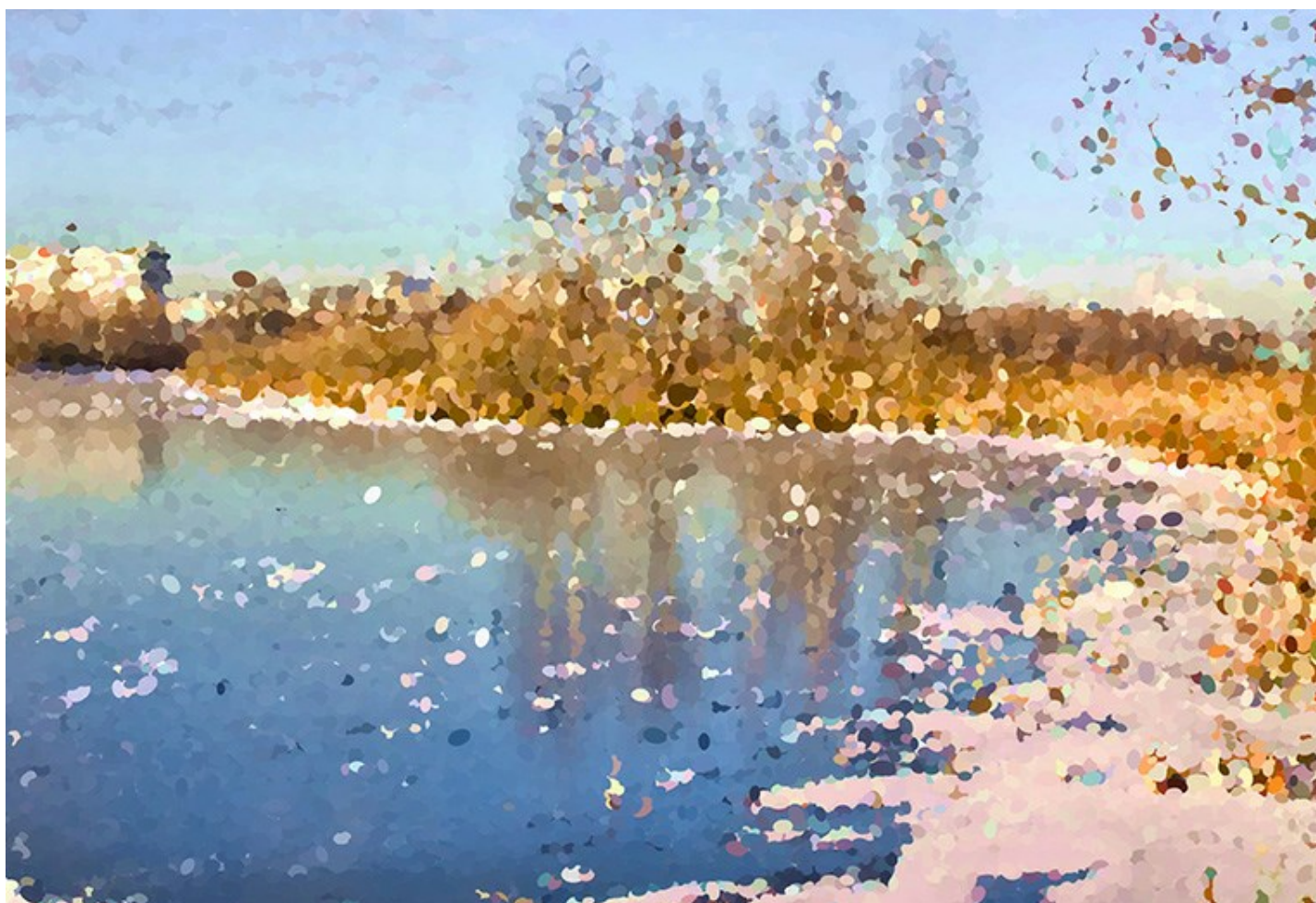
With the **AKVIS Points** software you can easily create gorgeous works of art using the [pointillism](#) technique. Make paintings in the style of Georges Seurat and Paul Signac! Discover the world of bright colors!



The software includes ready-to-use AKVIS [presets](#) which help you start working. It's possible to create your own presets by saving your favorite photo-to-painting settings.

The program offers the choice between a flat paper and a [rough surface](#) that makes the impression even more vivid. It's also possible to add a signature, an inscription, or a copyright [watermark](#) to the picture.

The software supports the [Batch Processing](#) feature which helps you to automatically convert a series of images with the same effect settings. It is useful when you need to create a number of paintings at the same style for a book or a blog or to convert a video into a cartoon with the pointillism technique.



The functionality of the software depends on the license type. Some features are only available for *Home Deluxe* and *Business* licenses. During the trial period you can try all options and choose the license you like.

Special Deluxe/Business features:

While filtering the image, the program makes snapshots of intermediate steps. Thanks to the indispensable and spectacular [Timeline](#) feature it's possible to create variations of paintings without adjusting the settings.

The program gives at your disposal the special [Post-Processing Tools](#) to add final touches to your masterpiece, and strengthen/reduce the pointillism effect on certain areas.

Consult the [comparison table](#) for more information about licenses and features.



AKVIS Points is available as a *standalone* program and as a *plugin* to a photo editor, for Windows and Mac.

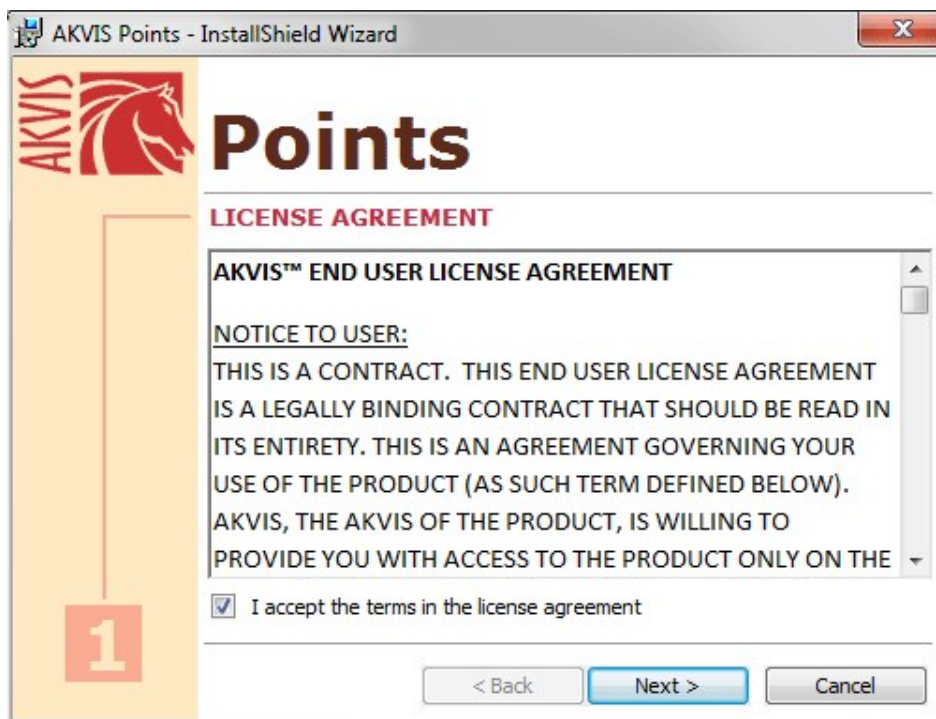
The plug-in is compatible with Adobe Photoshop, Corel PaintShop Pro, Painter, etc. See the [compatibility page](#) for more details.

INSTALLATION

Follow the instructions to install **AKVIS Points** in Windows.


- Start the setup **exe** file.
- Select your language and press the **OK** button to launch the installation process.
- To continue the installation process you have to read and accept the **License Agreement**.

Activate the check box "**I accept the terms in the license agreement**", and press **Next**.



- To install the **Plugin** you should select your photo editor(s) from the list.

Hint:

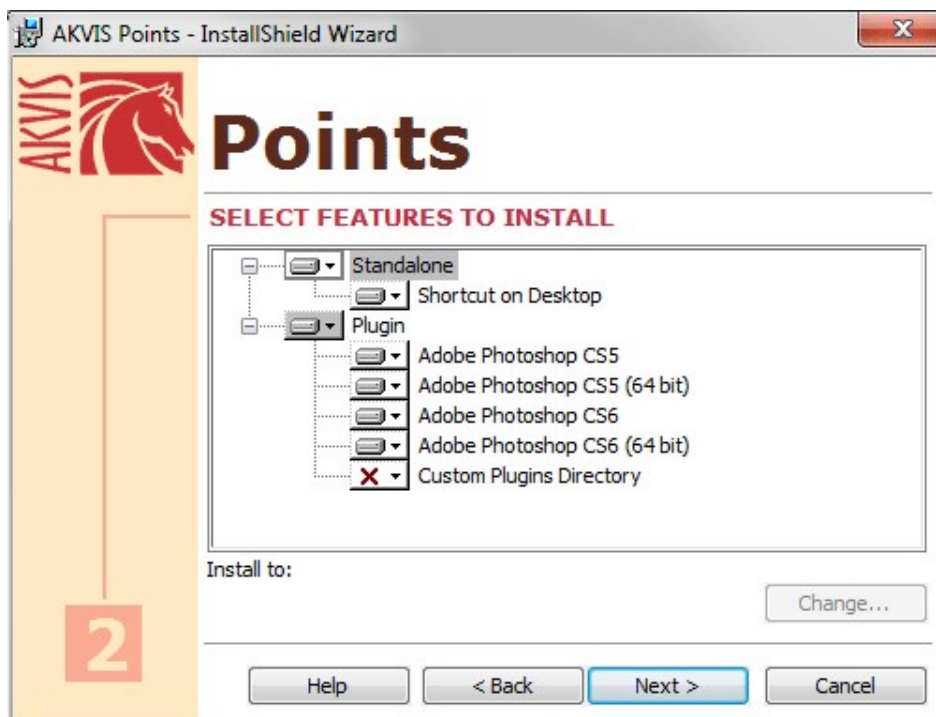
If your photo editor is not in the list, activate the component  **Custom Plugins Directory** and choose the folder where you keep all plugins and filters, for example, **C:\My Plugins**. In this case you should set this folder as the plugins folder in the settings of your photo editor.

Or you can copy the **8bf** file into the Plug-ins folder of your image editor.

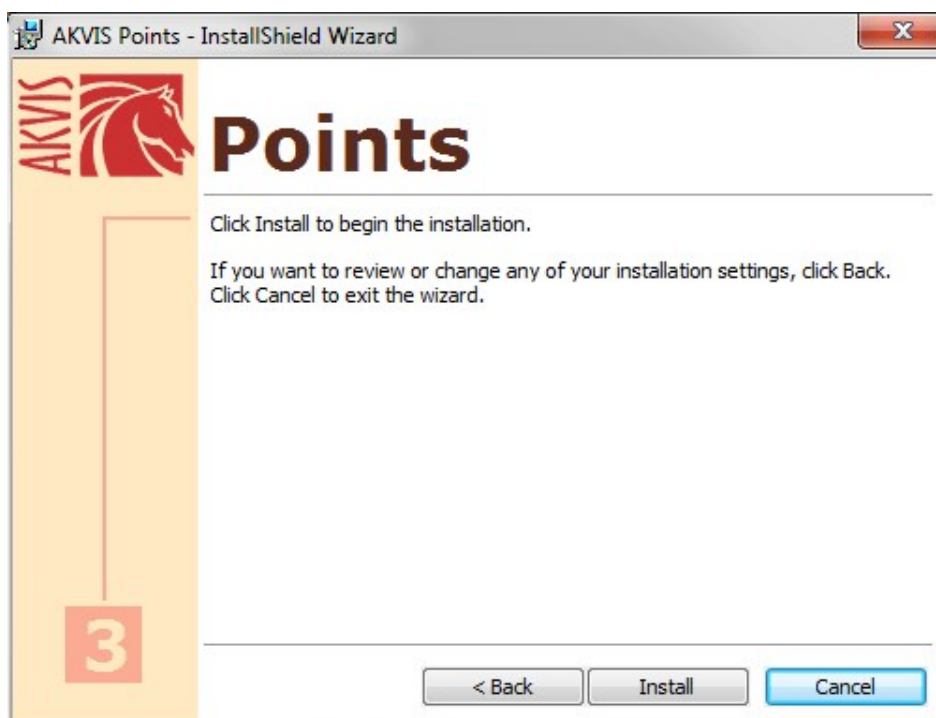
To install the **Standalone version**, make sure that the check-box **Standalone** is activated.

To create a shortcut for the program on desktop, activate the component **Shortcut on Desktop**.

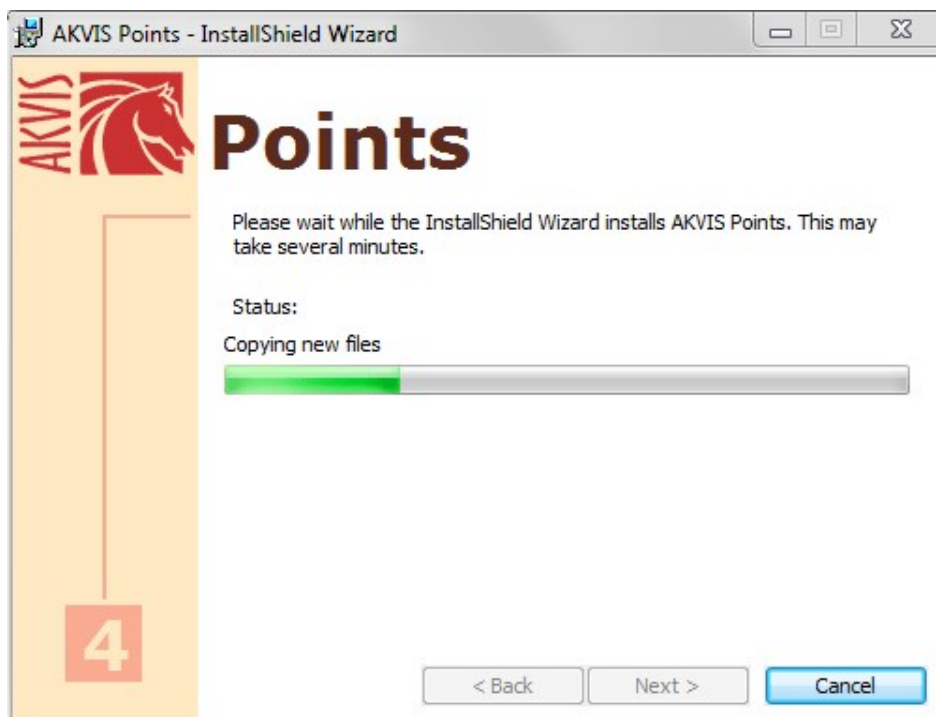
Press the button **Next**.



- Press the button **Install**.

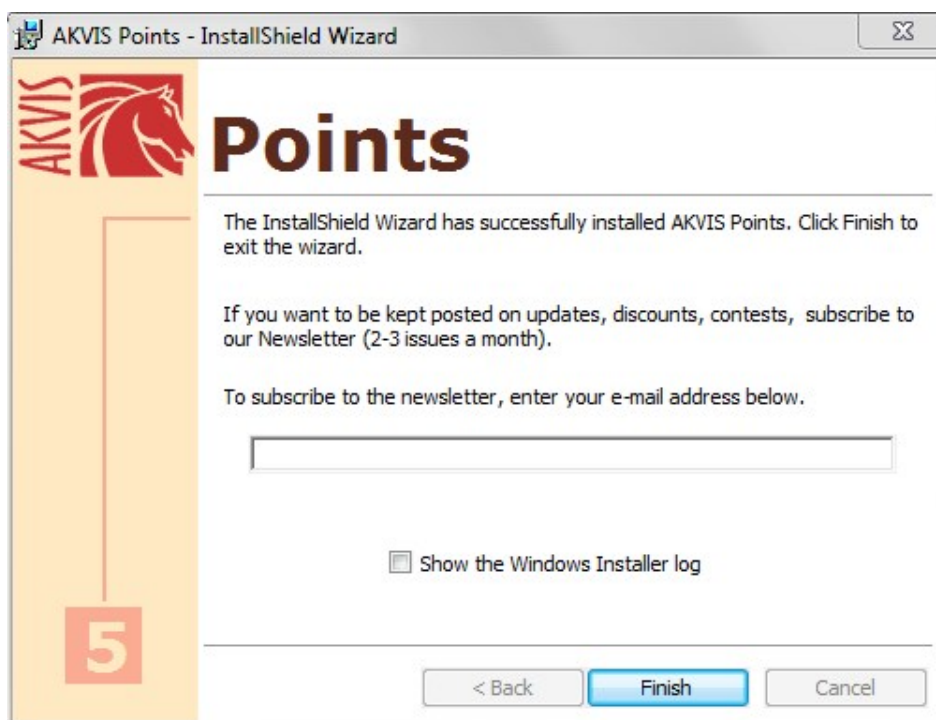


- The installation is in progress.



- The installation is completed.

You can subscribe to the **AKVIS Newsletter** to be informed about updates and events.



- Press **Finish** to exit Setup.

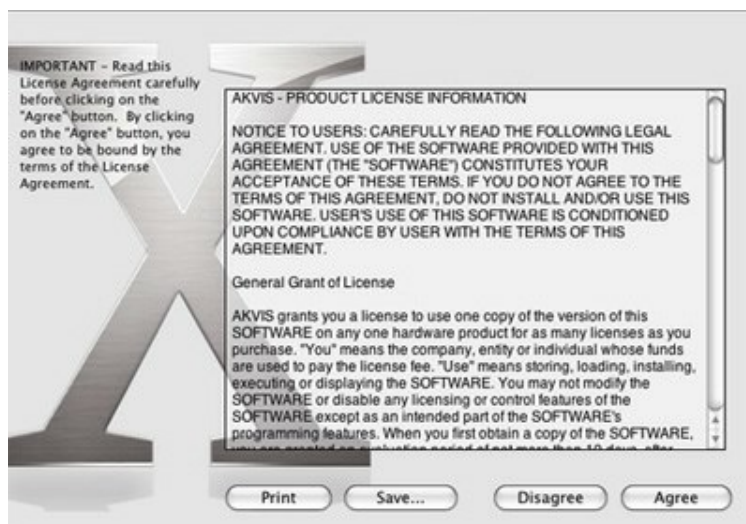
After installation of the **standalone** version of Points, you will see a new line in the **Start** menu: **AKVIS - Points** and a shortcut on desktop, if during installation the component **Shortcut on Desktop** was enabled.

After installation of the Points **plugin** you will see a new item in the Filter/Effects menu of your photo editor. For example in Photoshop: **Filter** -> **AKVIS** -> **Points**. Please use this command to launch the plugin in the editor.

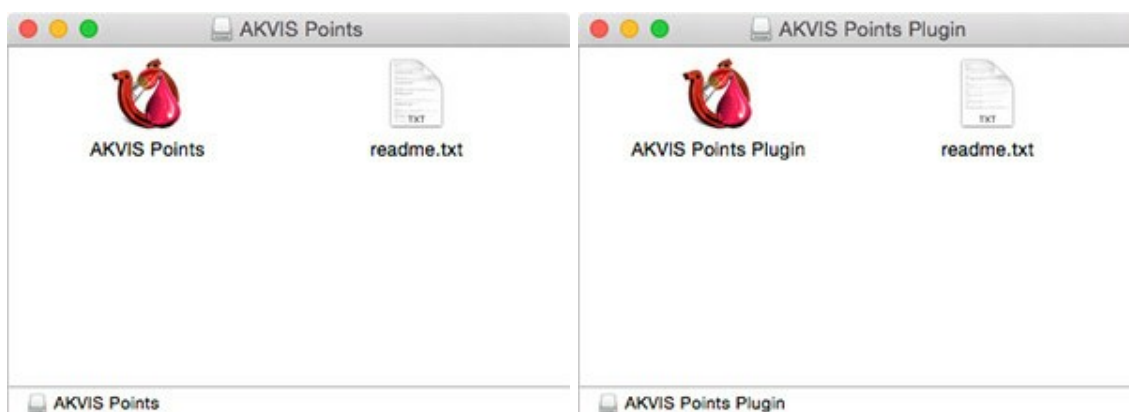
INSTALLATION

Follow the instructions to install **AKVIS Points** in a Mac computer:

- Open the virtual disk **dmg**:
 - **akvis-points-app.dmg** to install the **Standalone** version
 - **akvis-points-plugin.dmg** to install the **Plugin** to your image editor (Photoshop or Photoshop Elements).
- Read the **License Agreement** and press **Agree**, if you agree with the conditions.



- **Finder** will open with **AKVIS Points** application or **AKVIS Points PlugIn** inside.



- To install the **Standalone** version just drag the **AKVIS Points** application into the folder **Applications** (or any other place you like).

To install the **Plugin** drag the entire **AKVIS Points PlugIn** folder into the **Plug-Ins** folder of your graphic editor.

For example:

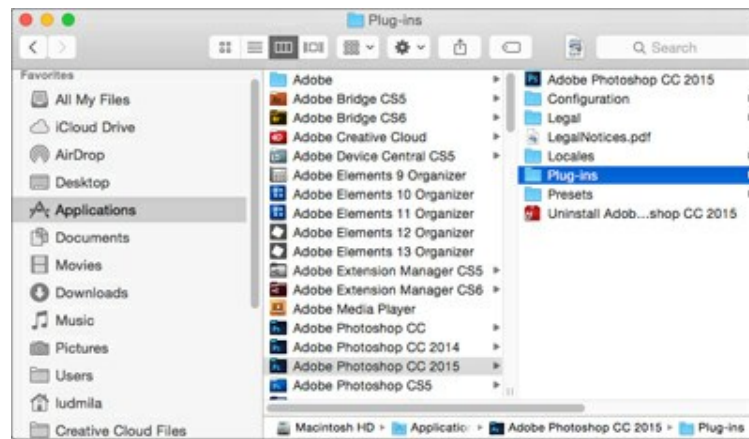
if you use **Photoshop CC 2018**, copy the plugin into **Applications/Adobe Photoshop CC 2018/Plug-Ins**;

if you use **Photoshop CC 2017**, copy it into **Applications/Adobe Photoshop CC 2017/Plug-Ins**;

if you use **Photoshop CC 2015.5**, copy it into **Library/Application Support/Adobe/Plug-Ins/CC**;

if you use **Photoshop CC 2015**, copy it into **Applications/Adobe Photoshop CC 2015/Plug-ins**;

if you use **Photoshop CS6**, copy it into **Applications/Adobe Photoshop CS6/Plug-ins**.



After installation of the plugin, you will see a new item in the Filter menu of your photo editor. In Photoshop select in menu: **Filter -> AKVIS -> Points**.

Run the standalone app by double-clicking on its icon in Finder.


HOW TO ACTIVATE AKVIS SOFTWARE

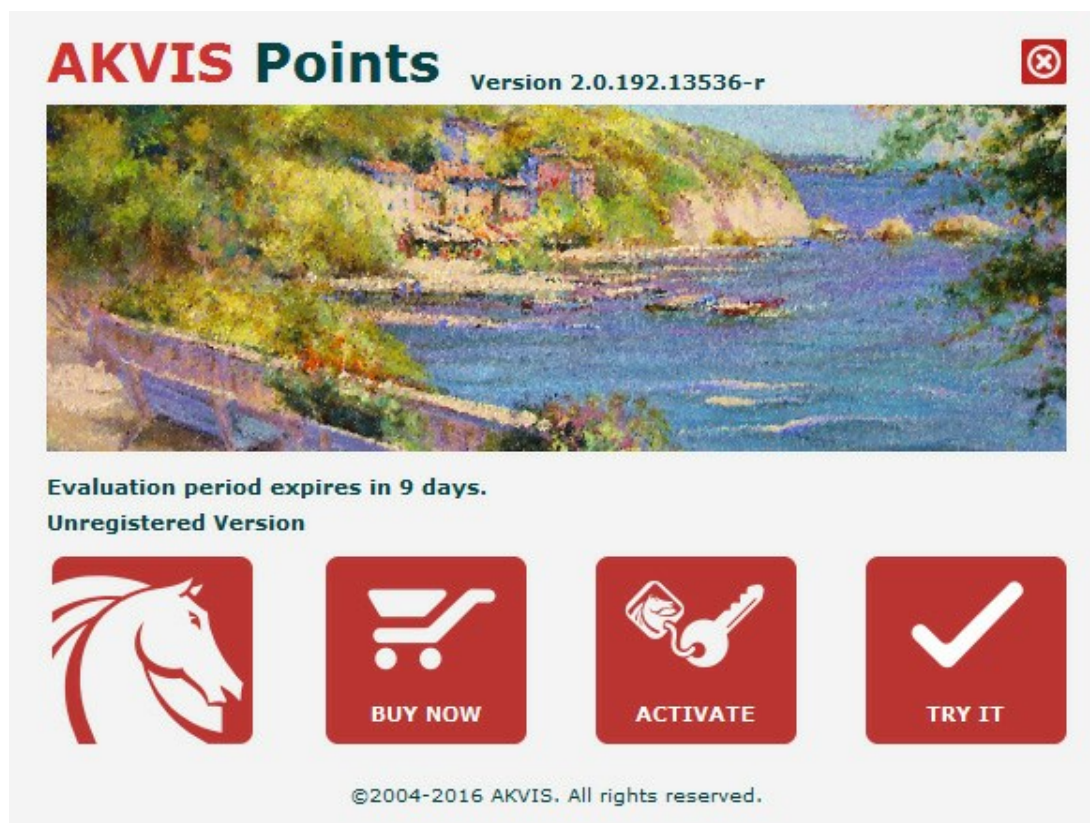
Attention! During the activation process your computer must be connected to Internet.

If it is not possible, we offer you an alternative way ([see below for Offline Activation](#)).

Download [AKVIS Points](#) and install the program. [Read the Installation Instruction here](#).

When you run the unregistered version, a splash window will appear displaying general information about the version and the number of days left in your trial period.

You can also open the **About the Program** window by pressing the button  in the program's Control Panel.



Click on **TRY IT** to evaluate the software. A new window will appear with variants of licenses to test.

You do not need to register the trial version to try all features of the software. Just use the program during the evaluation time (10 days after the 1st start).

During the test period you can try all options and choose the license you like. Select one of the offered functionality types: **Home** (Plugin or Standalone), **Home Deluxe**, or **Business**. Your choice of license will affect which features will be available in the program. [Consult the comparison table](#) for more details about license types and versions of the software.

If the trial period has expired, the **TRY IT** button is disabled.

Click on **BUY NOW** to choose a license to order.

When the payment is effected, your serial number for the program will be sent to you within minutes.

Click on **ACTIVATE** to start the activation process.

AKVIS Points Version 2.0.192.13536-r

ACTIVATION

Customer Name:

Serial Number (Key):

☒ Direct connection to the activation server

☐ Send a request by e-mail

Lost your serial number? [Restore it here.](#)

Activation problems? [Contact us.](#)

[Copy HWID.](#)

ACTIVATE **CANCEL**

©2004-2016 AKVIS. All rights reserved.

Enter your name (the program will be registered to this name).

Enter your serial number (your license key).

Choose the method of activation — either direct connection to the activation server or by e-mail.

Direct connection:

We recommend activating the program using direct connection, as it is the easiest way.

At this step your computer must be connected to Internet.

Press **ACTIVATE**.

Your registration is completed!

Request by e-mail:

In case you have chosen activation by e-mail, a message with all necessary information will be created by the program.

NOTE: You can also use this method for **Offline Activation**:

If your computer is not connected to Internet, transfer the activation message to a computer connected to Internet, for example, with a USB stick. Send us this information to: activate@akvis.com.

Please do not send the screenshot! Just copy the text and save it.

We need your serial number for the software, your name, and HardwareID (HWID) of your computer.

We will generate your license file (**Points.lic**) using this information and will send it to your e-mail address.

Save the **.lic** file (do not open it!) to your computer where you want to register the software, in the **AKVIS** folder in Users' Shared (Public) Documents:

- ◆ **Windows Vista/7/8/10:**

Users\Public\Documents\AKVIS;

- ◆ **Windows XP:**

Documents and Settings\All Users\Documents\AKVIS;

- ◆ **Mac:**

Users/Shared/AKVIS.

Your registration is completed!

AKVIS Points Version 2.0.192.13536-r



License: Home Deluxe (Lifetime)
Licensed to: John Smith
Free updates to new versions till: 2016-12-31



©2004-2016 AKVIS. All rights reserved.

When the program is registered, **BUY NOW** turns to **UPGRADE** that lets you improve your license (for example, change **Home** to **Home Deluxe** or **Business**).

APPLY POINTILLISM EFFECT TO YOUR PHOTOS

AKVIS Points turns photos into paintings using the technique of pointillism. The software is available as a standalone application and as Photoshop compatible plugin.

The functionality of the software depends on the license type. Some features are only available for **Deluxe** and **Business** licenses.

License Comparison:	Home (Plugin)	Home (Standalone)	Home Deluxe (Plugin+Standalone)	Business (Plugin+Standalone)
Purpose				
<i>non-commercial use</i>	✓	✓	✓	✓
<i>commercial use</i>	—	—	—	✓
Edition				
Plugin 🖱️	✓	—	✓	✓
Standalone 🖼️	—	✓	✓	✓
Features				
Pointillism Effect	✓	✓	✓	✓
Tools:				
Crop	—	✓	🖱️	🖱️
Post-Processing Tools	—	—	✓	✓
Additional Features:				
Timeline	—	—	✓	✓
Text	✓	✓	✓	✓
Canvas	✓	✓	✓	✓
Frames	✓	✓	✓	✓
Import/Export Files:				
*.points (Presets)	✓	✓	✓	✓
Batch Processing	✓	✓	✓	✓
Share	✓	✓	✓	✓
Print	—	✓	🖱️	🖱️
Large Format Print	—	✓	🖱️	🖱️
EXIF, IPTC	—	✓	🖱️	🖱️
Color Space				
RGB	✓	✓	✓	✓
CMYK	✓	✓	✓	✓
Lab	✓	✓	✓	✓
Grayscale	✓	✓	✓	✓
8 / 16 bits	✓	✓	✓	✓

32 bits	✓	✓	✓	✓
Image Format				
TIFF	✓	✓	✓	✓
JPEG	✓	✓	✓	✓
BMP	✓	✓	✓	✓
PNG	✓	✓	✓	✓
RAW	✓	✓	✓	✓
DNG	✓	✓	✓	✓
PSD	✓	—	👍	👍
OS				
Windows	✓	✓	✓	✓
Mac	✓	✓	✓	✓
10-days trial	✓	✓	✓	✓
Price	\$ 49	\$ 49	\$ 69	\$ 89

WORKSPACE

AKVIS Points turns your photos into pointillism painting artworks. The software can be used independently as a *standalone* program or in a photo editor as a *plugin* filter.

Standalone is an independent program; you can open it by clicking on the program's icon.

To launch the standalone version, run the program directly:

On a Windows computer - select it from the **Start** menu or use the program's shortcut.

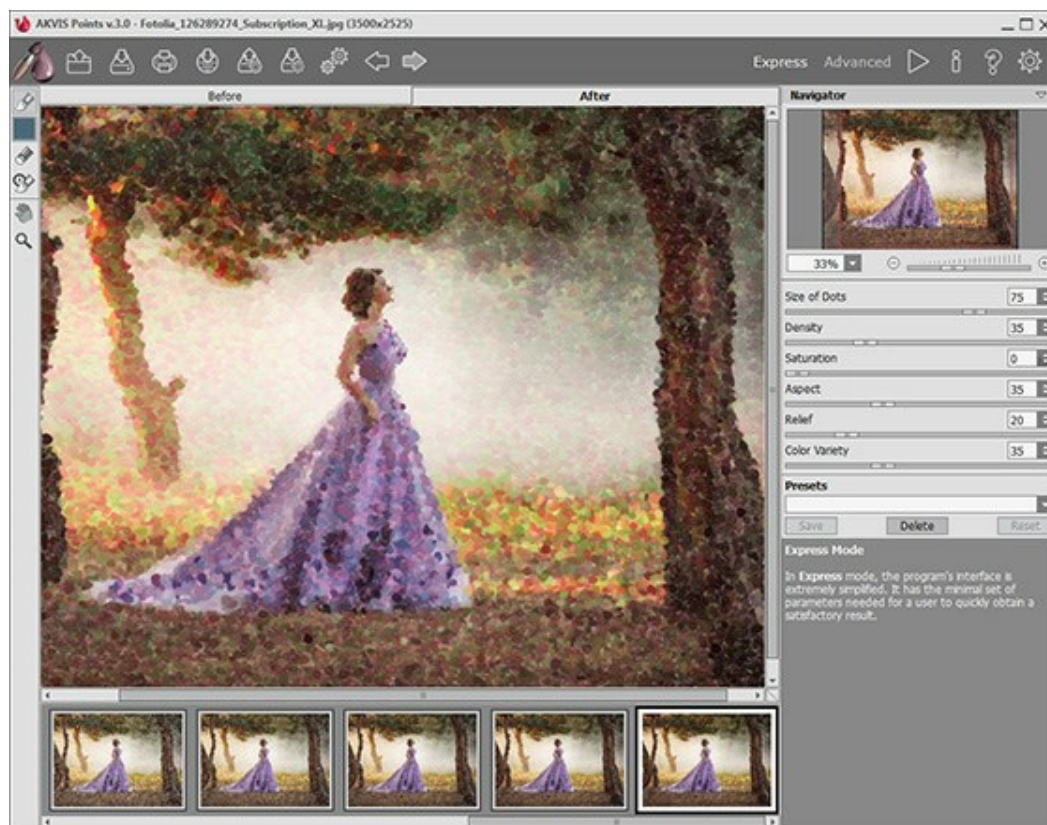
On a Mac computer - launch the app from the **Application** folder.

Plugin is an add-on for a [photo editor](#), for example for Photoshop.

To call the plugin, [select it from filters](#) of your image editing program.

The workspace will be arranged according to the editing mode chosen in the Control Panel: **Express** or **Advanced**.

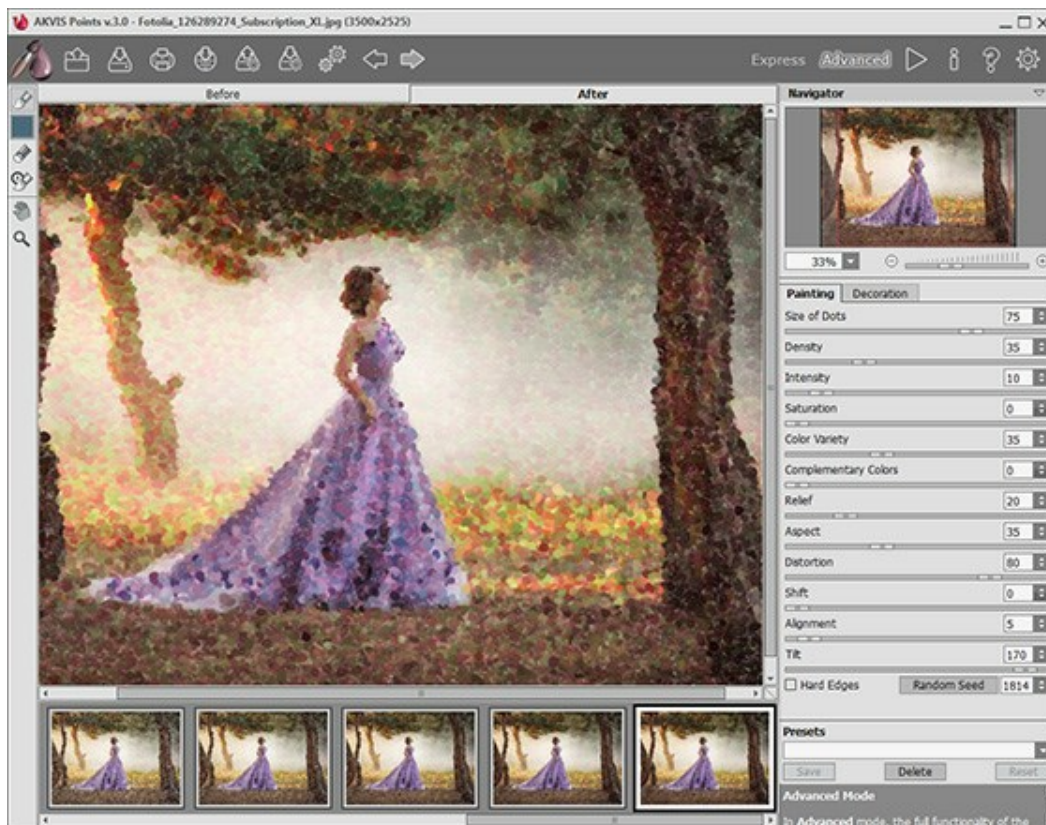
In **Express** mode, the program's interface is extremely simplified. It has the minimal set of parameters needed for a user to quickly obtain a satisfactory result.



Workspace of AKVIS Points (Express)

In **Advanced** mode, the full functionality of the program is available.


Note: All features and parameters work in **Express** mode. Some are hidden and use default values or those of a chosen preset.




Workspace of AKVIS Points (Advanced)


The left part of the **AKVIS Points** window is taken by the **Image Window** with two tabs: **Before** and **After**. The **Before** tab shows the original photo, the **After** tab - the result. You can switch between them by left-clicking on the tab with mouse button. To compare the original and the resulting images, click on the image and hold the button pressed - the program will currently switch between tabs.


In the upper part of the program's window you can see the **Control Panel**:


The button  opens the home page of **AKVIS Points**.


The button  (only in the standalone version) opens an image for processing. The hot-keys are **Ctrl+O** on Windows, **⌘+O** on Mac.

Right mouse click on this button displays the list of recent images. You can change their number in the program's [Preferences](#).


The button  (only in the standalone version) saves image to the disk. The hot-keys are **Ctrl+S** on Windows, **⌘+S** on Mac.


The button  (only in the standalone version) calls the **Print** dialog box. The hot-keys are **Ctrl+P** on Windows, **⌘+P** on Mac.


The button  lets posting pictures from the program to the social networks: Twitter, Flickr, Tumblr, Google+.


The button  exports presets (user settings for the image processing). You can save any number of presets to a separate file with the ending **.points** extension.

The button  imports a list of presets (from the **.points** file).


The button  (only in the standalone version) opens the **Batch Processing** dialog to automatically process a series of images.

The button  cancels the last operation (with the tools). It is possible to cancel several operations in a row. The hotkeys are **Ctrl+Z** on Windows, **⌘+Z** on Mac.


The button  returns the last cancelled operation. It is possible to return several operations in a row. The hotkeys are **Ctrl+Y** on Windows, **⌘+Y** on Mac.

The button  initiates image processing with the current settings. The resulting image is shown in the **After** tab.

The button  (only in the plugin version) applies the result to the image and closes the plugin.

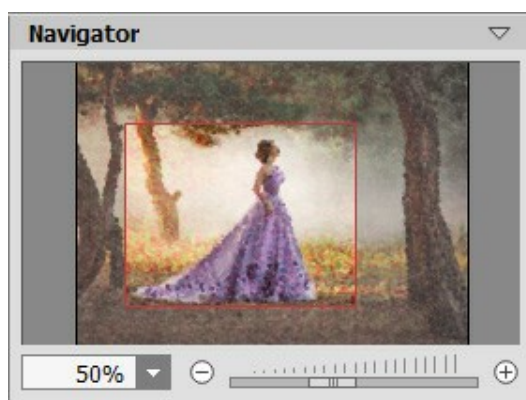
The button  shows information about the program: version, trial period, license.

The button  calls the **Help** files. The hot-key is **F1**.

The button  calls the **Preferences** dialog box for changing the program's options.





To the left of the main window there is the **Toolbar**. Different tools appear depending on the active tab, **Before** or **After**. The tools are divided into the groups: **pre-processing** (in the **Before** tab), **post-processing** (in the **After** tab), and **additional** tools (available in both tabs).

You can navigate and scale the image using the **Navigator**. The frame in the **Navigator** surrounds the area of the image which is visible in the Image Window; the area outside of the frame will be shaded. The frame can be dragged, thereby changing the visible portion of the image. To move the frame, place the cursor within it, left click the mouse, and then drag.


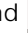




Navigator

To scroll the image in the **Image Window** you can press the spacebar on the keyboard and drag the image with the left mouse button. Use the scroll wheel of the mouse to move the image up/down, by keeping the **Ctrl** key pressed – to the left/to the right, by keeping the **Alt** key pressed – scale the image. Right-click on the scroll bar to activate the quick navigation menu.

Use the slider or the buttons  and , to scale the image. When you click on the  button or move the slider to the right, the image scale increases. When you click on the  button or move the slider to the left, the image scale reduces.

You can also change the image scale by entering a new coefficient into the scale field. The fall-down menu shows some frequently used coefficients.

You can use hot-keys to change the image scale  and **Ctrl** +  ( +  in Mac) to increase the image scale and  and **Ctrl** +  ( +  in Mac) to reduce the scale.

Under the **Navigator** there is the Settings Panel with the **Painting** and **Decoration** tabs:

Painting: Here you can adjust the **parameters of the pointillism effect**.

Decoration: You can add **text** to your image, adjust the **canvas**, and apply a **frame**.

Below, in the **Presets** field you can save the current settings as a preset to use them in the future. The current settings can be saved, edited, deleted. When you launch the program, it uses the settings of the last used preset.

Under the **Settings Panel** you can see **Hints** for the parameters and buttons when you hover over them with the cursor. You can choose where the hints will be shown or hide them in the **Preferences** dialog box.


HOW TO USE THE PROGRAM

AKVIS Points lets you transform a photo into a pointillism painting. It is available as a *standalone* program and as a *plugin* filter for Photoshop and other editors.

To add a pointillism effect to your image, follow these steps:

Step 1. Open an image.

- If you work with the standalone edition:

The dialog box **Select File to Open** appears if you double-click on the empty workspace of the program or if you click on . Use the hot-keys: **Ctrl+O** on Windows, **⌘+O** on Mac. You can also drag the required image into the workspace of the program.
The standalone program supports **JPEG, RAW, PNG, BMP, and TIFF** file formats.

- If you work with the plugin:

Open an image in your [photo editor](#) by calling the command **File -> Open**.

Call the plugin from the menu of the editor:

in **Adobe Photoshop** and **Photoshop Elements** - **Filter -> AKVIS -> Points**;
in **Corel PaintShop Pro** - **Effects -> Plugins -> AKVIS -> Points**;
in **Corel Photo-Paint** - **Effects -> AKVIS -> Points**.

The first time the program is opened it will be in **Express** mode, with a simplified interface and a minimal set of sliders, which help to quickly obtain a satisfactory result.




AKVIS Points Window (Express)

Experienced users who are familiar with the capabilities of **AKVIS Points** can switch to **Advanced** mode. Switch to this mode by clicking the **Advanced** button: the interface's appearance will change, granting access to the full functionality of the program.

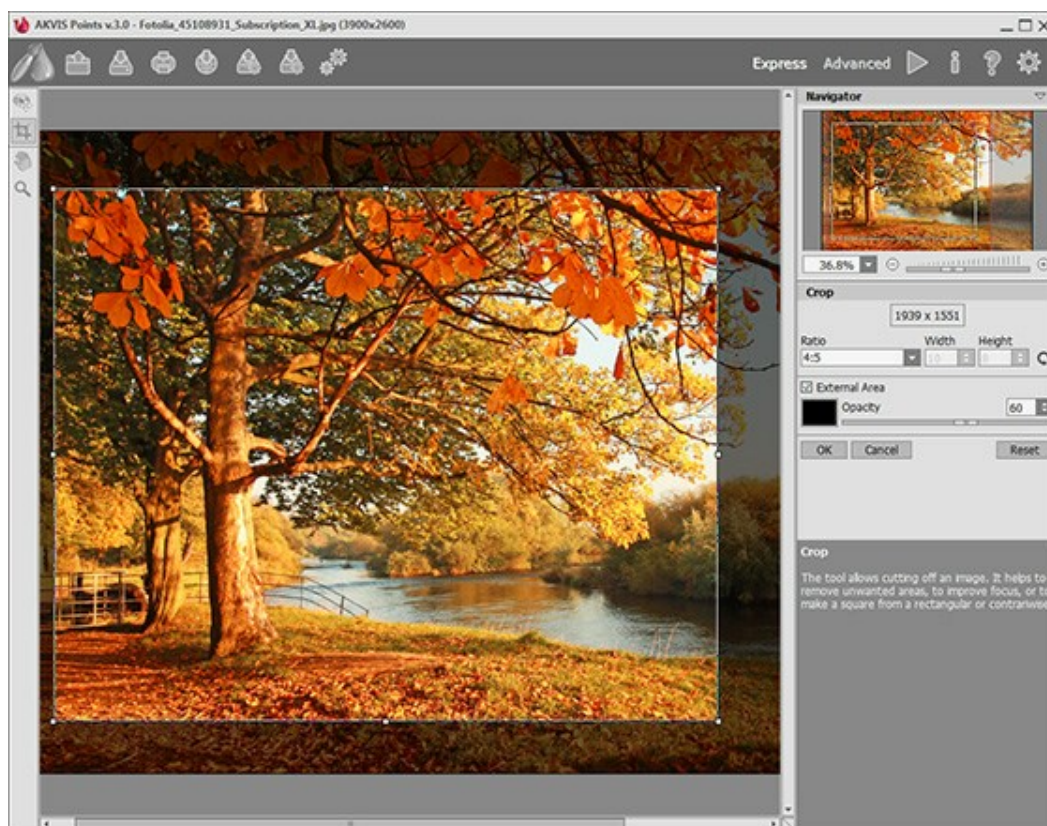
Note: All parameters work in **Express** mode as well; some are hidden and the program uses values of a chosen preset.



AKVIS Points Window (Advanced)


Step 2. In the standalone version, before applying the pastel effect, you can cut off unwanted areas of the picture and improve its composition with the **Crop** tool .

If you use the plugin, you can do this in your image editor.




Crop Tool


Step 3. Adjust the [effect settings](#) in the **Painting** tab. You can choose one of the [presets](#) or set the parameters to your liking.

The result will be immediately shown in the [quick preview window](#) which is visible in the **Before** tab if the button  in the Toolbar is pressed.



Preview Window

Step 4. To convert the entire image into a painting press the button .

The progress bar appears over the image, with the icon  (to make a [snapshot](#)) and the **Stop** button (to interrupt the process).

Step 5. To make your painting even more realistic, you can use the **Decoration** options: adjust the [canvas](#), apply a [frame](#), and add [text](#) to your image.

Hint: The order of the application of **Canvas/Frame/Text** depends on the position of the tabs. Drag the tabs to change the order.




Painting + Canvas + Text




Step 6. If you like your new settings, you can save them as a [preset](#) and use them later. Type a name for the preset and press **Save**. The new preset will be available in all tabs and will contain their settings.

Step 7. During the image processing, the program creates a list of intermediate shots which represent different stages of conversion - from a semi-processed painting to a practically finished work. They are displayed in the [Timeline](#) at the bottom of the main window. You can choose any of the intermediate results by clicking on it. The last image is the final result.


Note: This feature is only available for the [Home Deluxe](#) and [Business](#) licenses.





You can also add your favorite moments of image processing to the **Timeline** by taking a snapshot with the button  that is located right of the progress bar. [Read more.](#)

Step 8. You can edit the result and put the finishing touches to your painting with the [post-processing tools](#): **Pointillist Brush** , **Eraser** , and **History Brush** .

Note: These tools are only available for the [Home Deluxe](#) and [Business](#) licenses.


Hint: Use the post-processing tools at the final step! If you run the processing  again, the changes made with the tools will be lost.

Step 9. Share your image by clicking on . It opens the list of the services where you can publish the image: Twitter, Flickr, Tumblr, Google+.


In the standalone version, you can also [print](#) your result using .

Step 10. Save the processed image.

- If you work with the standalone edition:

Click on  to open the **Save As** dialog box. You can use the hot-keys: **Ctrl+S** on Windows, **⌘+S** on Mac. Enter a name for the file, choose the format (**TIFF**, **BMP**, **JPEG** or **PNG**) and indicate the target folder.

- If you work with the plugin:

Press the button  to apply the result and close the plugin window. The **AKVIS Points** plugin will close and the picture will appear in the workspace of the photo editor.

Call the **Save As** dialog box using the command **File -> Save As**, enter a name for the file, choose the format and indicate the target folder.

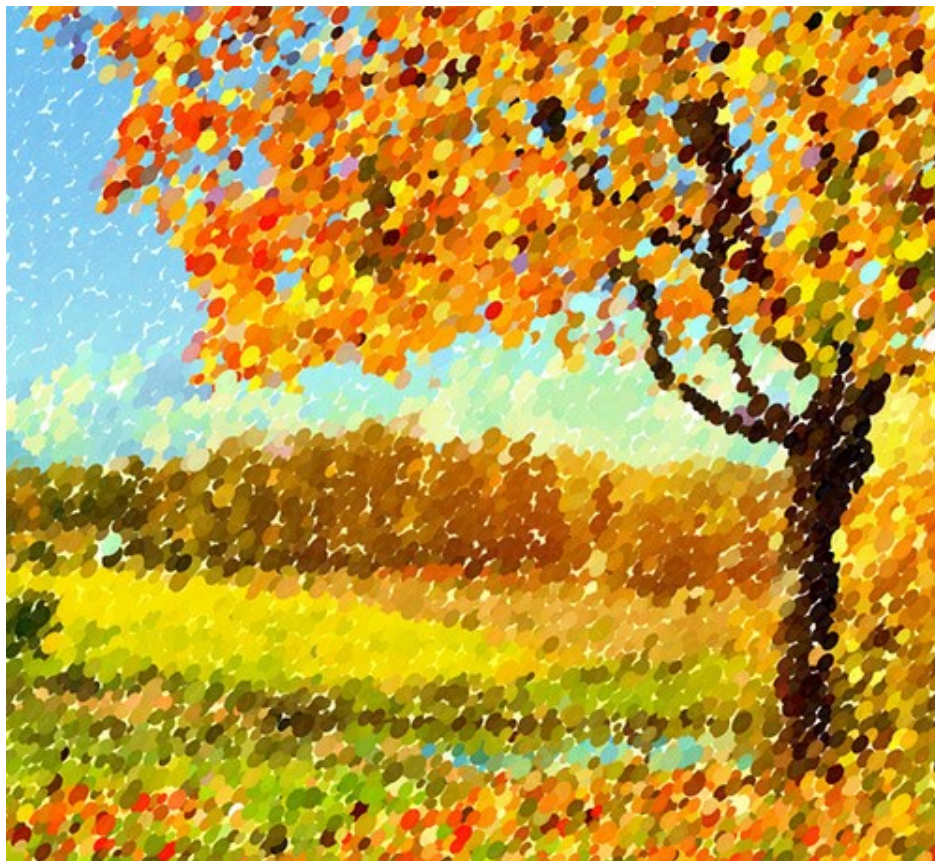


Pointillism Effect

POINTILLISM EFFECT

Pointillism is a painting technique characterized by applying of separate brush strokes in the form of dots or spots. A complex hue is decomposed into individual colors, which are displayed on the canvas as dotted strokes, small dabs of paint of pure colors. The optical mixing of these dots gives us the visual perception of an entire painting.

With the **AKVIS Points** software you can easily create gorgeous works of art in a pointillist manner.



Pointillism Painting

You can adjust the effect parameters in the **Painting** tab:

Size of Dots (10-100). This parameter specifies the maximum size of the points.



Size of Dots = 25



Size of Dots = 75

Density (10-100). The parameter changes the number of points in the image. The higher the value, the fewer areas will remain unpainted.



Density = 20



Density = 70

Intensity (0-100). The parameter controls the degree of the visibility of the brush strokes. The lower values give more transparent and blurred strokes. When increasing the parameter, the dots become more vivid and noticeable.



Intensity = 25



Intensity = 75

Saturation (0-100). This parameter defines the color intensity of the brush strokes. At the value = 0, the strokes have saturation of the original image. When increasing the parameter, the colors become brighter and more saturated.



Saturation = 10



Saturation = 50

Color Variety (0-100). When increasing the parameter, some of the points will change their color. The higher the value, the more colors appear in the image and the more saturated they become.



Color Variety = 5



Color Variety = 30

Complementary Colors (0-50). The parameter adds dots of complementary colors to the painting, making it more vibrant and bright.



Complementary Colors = 0



Complementary Colors = 20

Relief (0-100). This parameter gives volume to the strokes. At low values the points are flat. The higher the value the more pronounced the strokes are.



Relief = 20



Relief = 90

Aspect (0-100). The parameter determines the shape of the strokes based on the aspect ratio of the brush. At the value = 0, the strokes have a circular shape, when increasing the parameter they turn into ellipses.



Aspect = 0



Aspect = 90

Distortion (0-100). The parameter determines the deformation of points. At low values the points are rounded. Increasing the value makes points randomly distorted to irregular shapes.



Distortion = 0



Distortion = 100

Shift (0-100). This parameter makes the dots shift beyond the boundaries of their color region.



Shift = 20



Shift = 90

Alignment (0-100). This parameter changes the orderliness and uniformity of the brush strokes. At the value = 0, the dots are placed randomly. When increasing the parameter, the strokes are applied along the line defined by **Tilt**. The parameter has no effect if **Aspect** = 0.

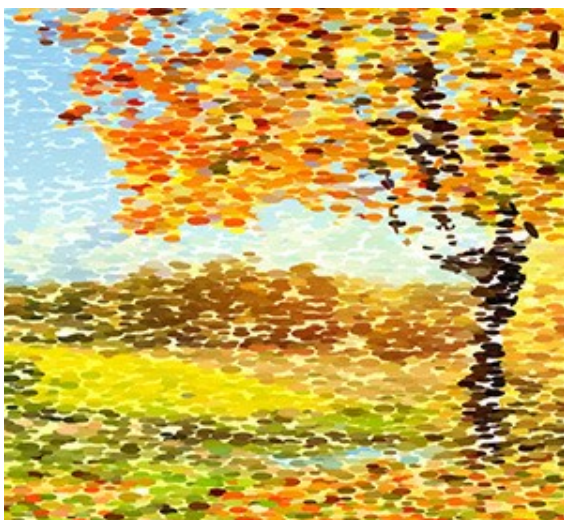


Alignment = 0



Alignment = 100

Tilt (0-180). The parameter sets the direction along which the brush strokes will be drawn. It is related to the next parameter and has an influence only if **Alignment** does not set to 0.



Tilt = 0

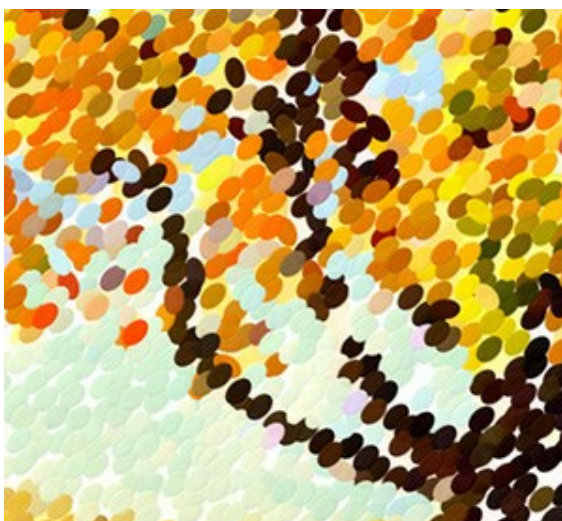


Tilt = 90

Hard Edges. The check-box allows you to determine the blurriness of points. When the check-box is disabled, the edges of points are blurry. When the option is enabled, the edges appear more defined.



Check-box is disabled



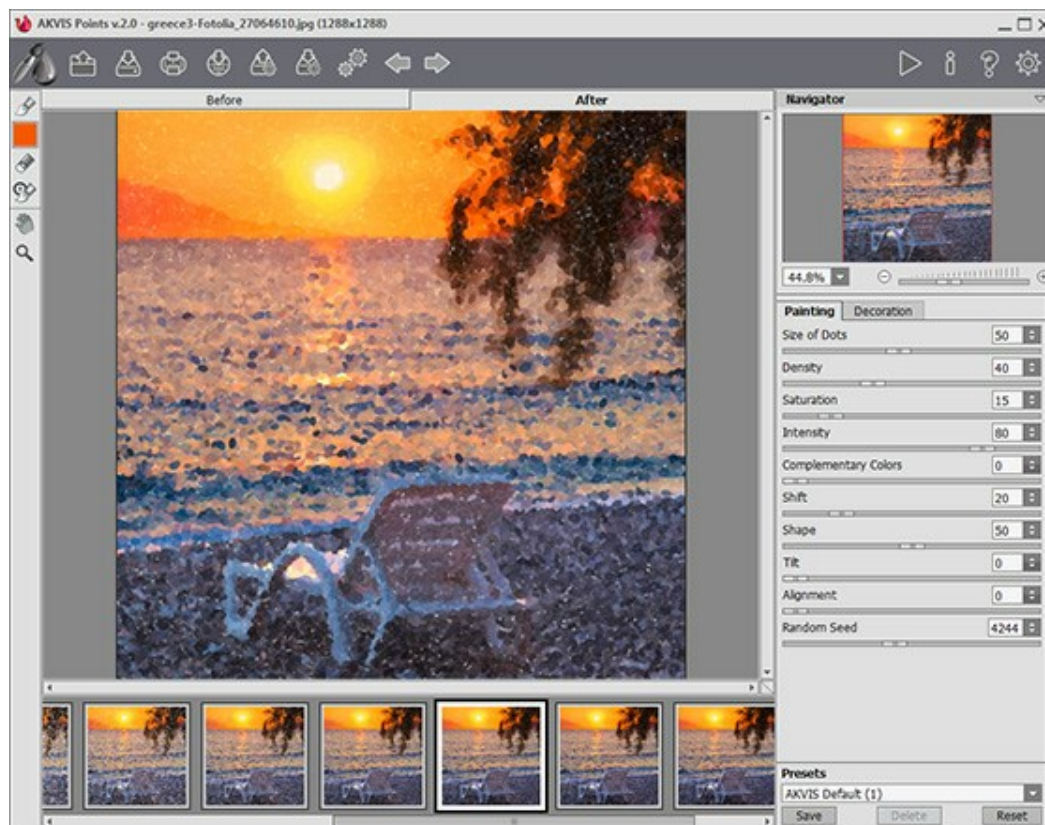
Check-box is enabled

Random Seed (0-9999). This is the starting number for the random number generator that defines the distribution of the brush strokes. Every number produces a unique distribution of color spots.

TIMELINE

In **AKVIS Points** you can observe the conversion of your photo into a pointillism painting in real time. During the process, the program creates a list of intermediate shots which represent different stages of conversion — from a semi-processed painting to a practically finished work of art. This useful feature lets you create variations of artworks without changing the effect settings.


The **Timeline** is displayed at the bottom of the main window.



AKVIS Points

Attention: The **Timeline** feature can only be used by owners of **Home Deluxe** and **Business** licenses. Note that everyone, even with a **Home** license, can get a semi-processed image using the **Stop** button in the progress bar.

Start conversion of your photo into a painting by pressing the button . You will see shots appearing at the bottom of the window in the course of processing.

You can also take snapshots of your favorite moments with the button  right of the progress bar. When you press it the painting in its current state will be added to the list; such manual shots are selected with the blue frame.

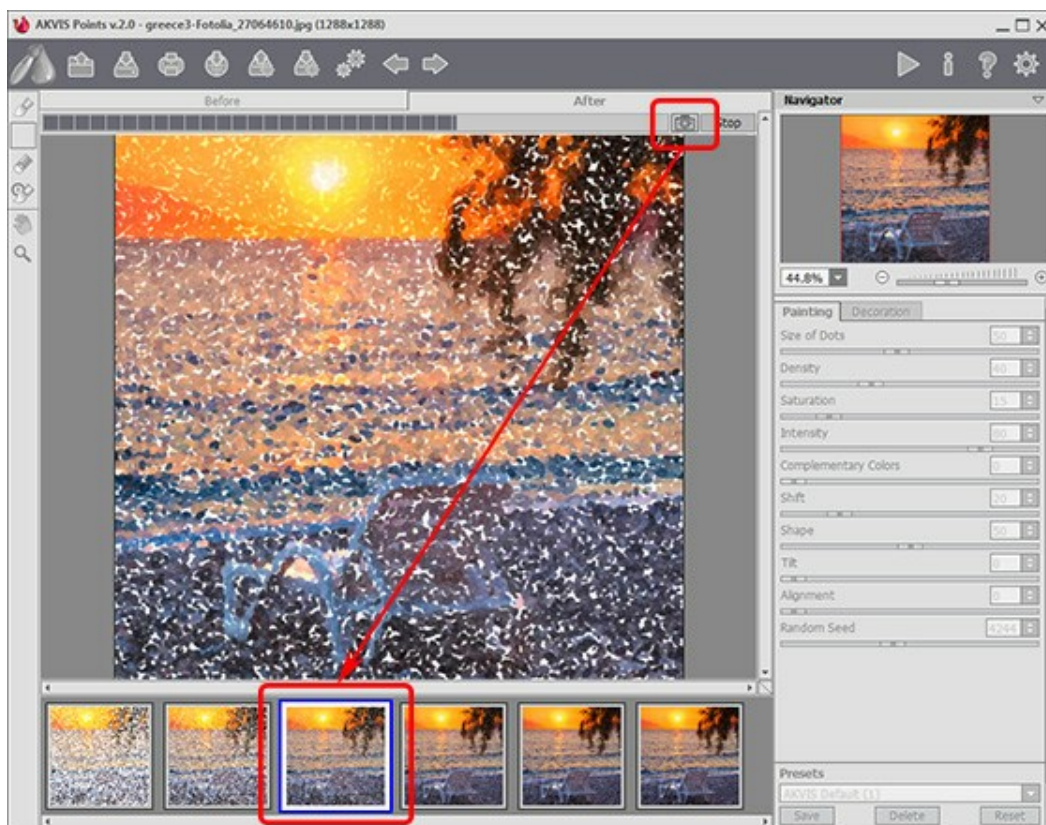



Image Processing

If you press the **Stop** button in the progress bar, image processing will be interrupted.

Browse the shots in the **Timeline** to find the image you like most. If you want to get back to your final result, click on the last shot in the list.



Variants of Painting




When you change the parameters and re-run image processing, the **Timeline** will be cleaned up and will start being filled up with new shots. You can save some of the variants by pinning them with a double click. In the upper corner of the selected shot appears the icon .


You can switch between the shots, change the settings and re-start processing - the pinned result will remain in the list. It's possible to unpin it with a double click.

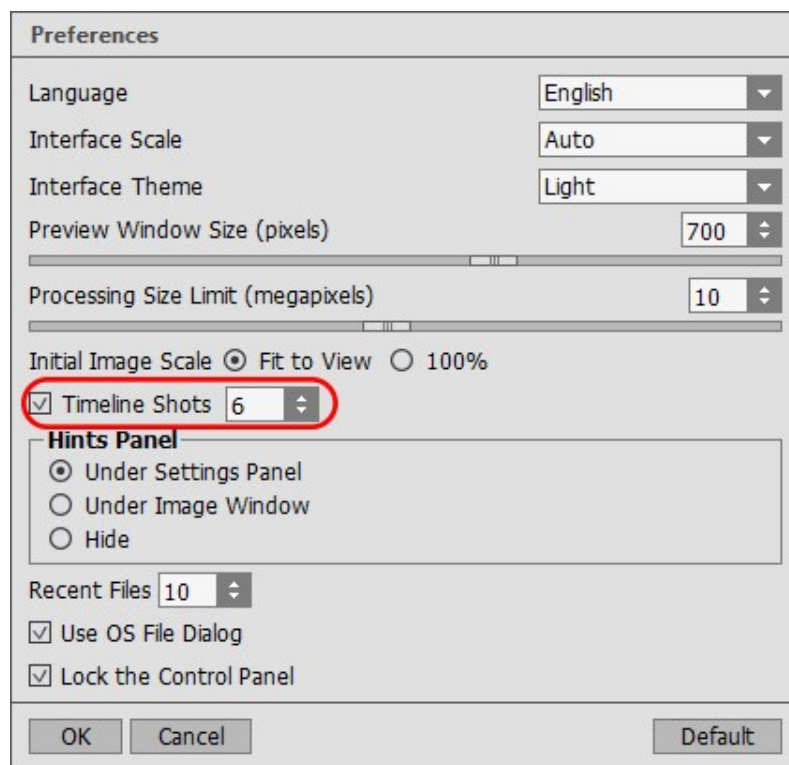


Attention! Loading a new image into the program removes all shots, including pinned.

Note:

After using the post-processing tools ,  and , switching to another image in Timeline will result in the loss of changes made with the tools. You can save the result under a new name and continue working.

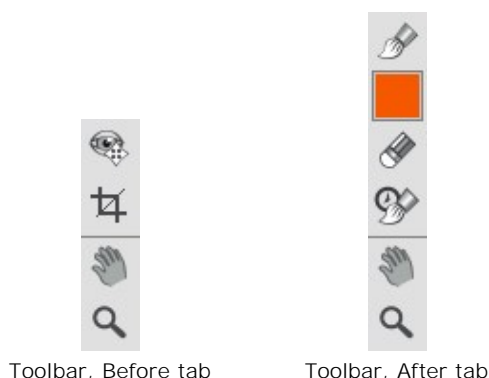
You can hide/show the **Timeline** in the program's preferences . If the **Timeline Shots** option is enabled, you can set the number of the shots created during image processing.



Program's Preferences


TOOLS AND THEIR OPTIONS

In **AKVIS Points**, different tools become visible depending on the active tab, **Before** or **After**:



The tools in the program are divided into the groups: **pre-processing** (**Before** tab), **post-processing** (**After** tab), and **additional** tools (**Before** and **After** tabs).


Pre-Processing Tools (on the **Before** tab):


Quick Preview  switches on/off the preview window. It is a square frame outlined with the "marching ants" that displays changes made in the **Painting** and **Decoration** tabs.

You can drag the preview square to any position with the left mouse button or with the double click. This lets you quickly preview the effect in different areas of the image. To compare the result of automatic conversion with the original picture, click and keep mouse pressed within the preview area.



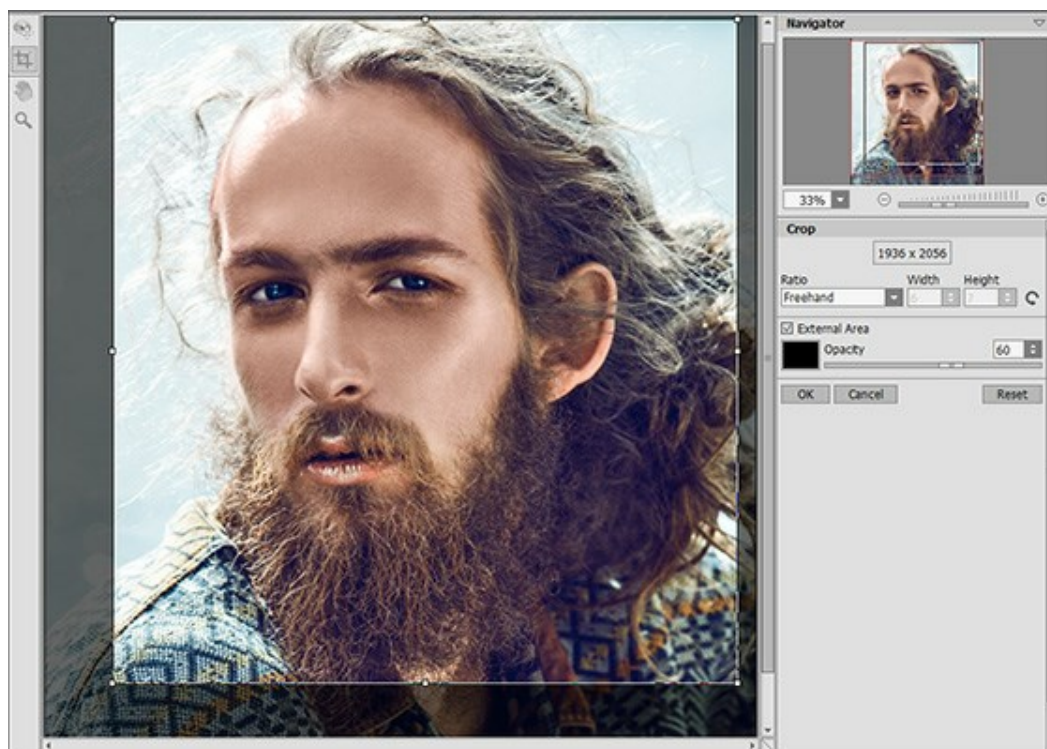
Preview Window

You can adjust the preview window size in the program's **preferences** .

Crop  (in the standalone version) lets you cut off unwanted areas in the image. The tool is useful when you want to improve the image composition, straighten a crooked photo, turn a horizontal photo into a vertical one and contrariwise.

You can change the crop area by dragging the sides and the angles of the bounding frame.

To apply the result and remove the areas outside the frame, press **OK** or use **Enter**. To cancel the operation and exit the tool, press **Cancel** or use the **Esc**-key. To restore the original area keeping the tool active, press **Reset** button.







Crop Image

Adjust the crop options:



You can choose the size of the crop rectangle from the **Ratio** drop-down list or enter your custom aspect ratio.


If the **External Area** check-box is enabled, you can change the color and opacity of the outer parts.

Post-Processing Tools (on the **After** tab, for Deluxe/Business):

Attention! The post-processing tools ,  and  are only available under the [Home Deluxe/Business](#) licenses, on the **After** tab. **Use them at the final step.** If you re-run the image processing , the changes made with the post-processing tools will be lost!

The tools' options are shown in a pop-up box which appears after right-clicking in the image.

You can use the buttons  and  to undo/redo the operations made with these tools. The hotkeys are **Ctrl+Z** and **Ctrl+Y** on Windows, **⌘+Z** and **⌘+Y** on Mac.

Pointillist Brush  lets you add color dots to the painting. It's possible to change the points with the following parameters:

Size (10-200). The parameter changes the tool's diameter.

Size of Dots (10-100). The parameter adjusts the maximum size of points drawn with the brush.

Density (10-100). The parameter changes the number of points in one movement. The higher the value, the more dots appear.

Saturation (0-100). The parameter defines the color intensity of the points. At the value = 0, they have saturation of the original image. When increasing the parameter, the colors become brighter and more saturated.

Intensity (0-100). The parameter controls the degree of the visibility of the points. The lower values give more transparent and blurred dots. When increasing the parameter, the dots become more vivid and noticeable.

Aspect (0-100). This parameter regulates the shape of the points. At the value = 0, they have a circular shape, when increasing the parameter they turn into ellipses.

Relief (0-100). This parameter gives volume to the strokes. At low values the points are flat. The higher the value the more pronounced the strokes are.

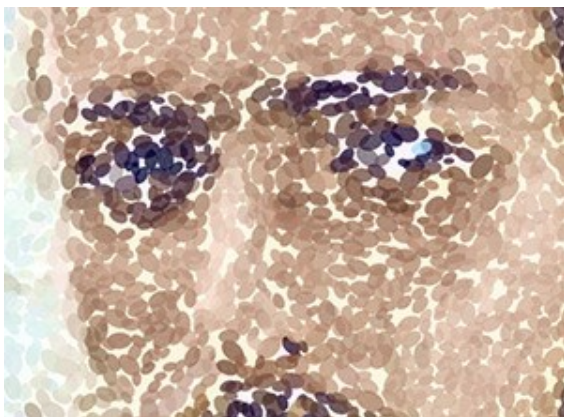
Color Variety (0-100). When increasing the parameter, some of the points will change their color. The higher the value, the more colors appear in the image and the more saturated they become.

Hard Edges. The check-box allows you to determine the blurriness of points. When the check-box is disabled, the edges of points are blurry. When the option is enabled, the edges appear more defined.

Original Colors. If the check-box is enabled, the brush uses the original colors in the processed area. If the check-box is disabled, the brush draws with the color shown on the square button on the Toolbar. Read below how to change the color.

Use Effect Settings. The button lets you set the tool's parameters at the same values as used for the [photo-to-painting](#) conversion.

Show Original (0-80). When increasing the parameter, the original image becomes visible through the effect. This parameter is auxiliary, it is useful for more precise drawing with the brush and does not affect the result.



Pointillism Effect



Using Pointillist Brush


Color. The color for the brush is displayed on the square button on the Toolbar. There are two ways to change colors for the brush: double-click on the square and choose a color from the dialog or left-click on the square (**I**-key) to activate the eyedropper and pick a color from the image.

Around the eyedropper's tip over the image there is a color ring that helps you select colors more precisely. If it's hard to catch a certain color, you can see adjacent tints and select the color on the ring while holding the **Ctrl**-key.



There are 5 sectors on the color ring:

1. Gradient line with the current color in the center. On the left side is +30% black, and on the right side +30% white.
2. The previously selected color.
3. The current color of the pixel where the cursor is.
4. Colors of surrounding pixels.
5. Average colors from areas of 3x3, 5x5, 11x11, 31x31, 51x51, 101x101 px.

Eraser  lets you erase color points, both generated with the effect and drawn with the brush. Processed areas are filled with white color of various transparency.

Size (1-1000). The maximum width of a line made by the brush.

Hardness (0-100). The amount of blurriness of the tool's edge.

Strength (1-100). The influence of the tool on an image.


Show Original (0-80). When increasing the parameter, the original image becomes visible through the effect. This parameter is auxiliary, it is useful for more precise drawing with the brush and does not affect the result.



Pointillism Effect



Using Eraser

History Brush  lets you fade the painting effect and restore the image to its original state. You can choose the mode of the tool: edit all changes or only tools keeping the pointillism effect.

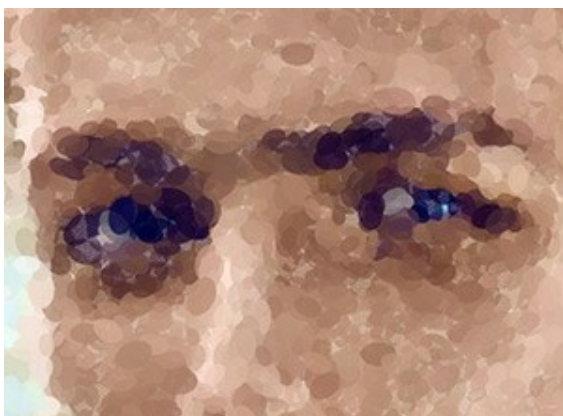
The tool's parameters:

Restore to Original. If the check-box is enabled, the tool lets weakening the painting effect, as well as the result of the post-processing tools. If the check-box is disabled, the brush edits only the tools but does not affect the result of the image processing.

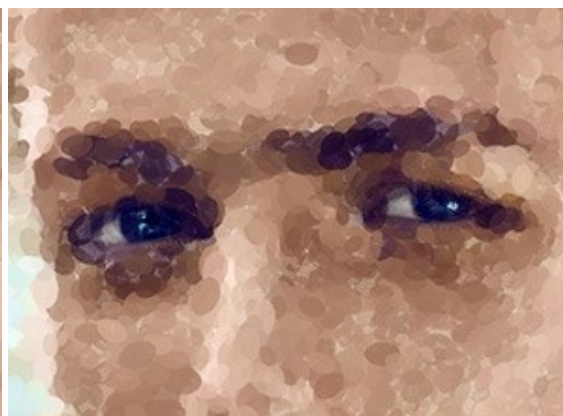
Size (1-1000). The maximum width of a line made by the brush.

Hardness (0-100). The blurriness of the tool's edges. The less the value the more blurry the tool's edges become. At value 100% the border between the brush's edges and the background is very distinct; at lower values the transition between these areas is smoother.

Strength (1-100). The degree of restoration to the original state. At lower values there will be less restoration and more blending with the effect; at value 100% the original image will be restored more completely.





Pointillism Effect




Using History Brush

Additional Tools (available on both tabs, for all licenses):

Hand  lets you scroll the image when it does not fit within Image Window at the desired scale. To use it click on the button, bring the cursor over the image, and while keeping the left mouse button pressed move in the desired direction. The hot-key is **H**.

Double-clicking on the tool's icon  on the Toolbar makes the image fit the window.

Zoom  lets you change the image's scale. To zoom in left click on the image. To zoom out left click with **Alt** on the image. The hot-key is **Z**.

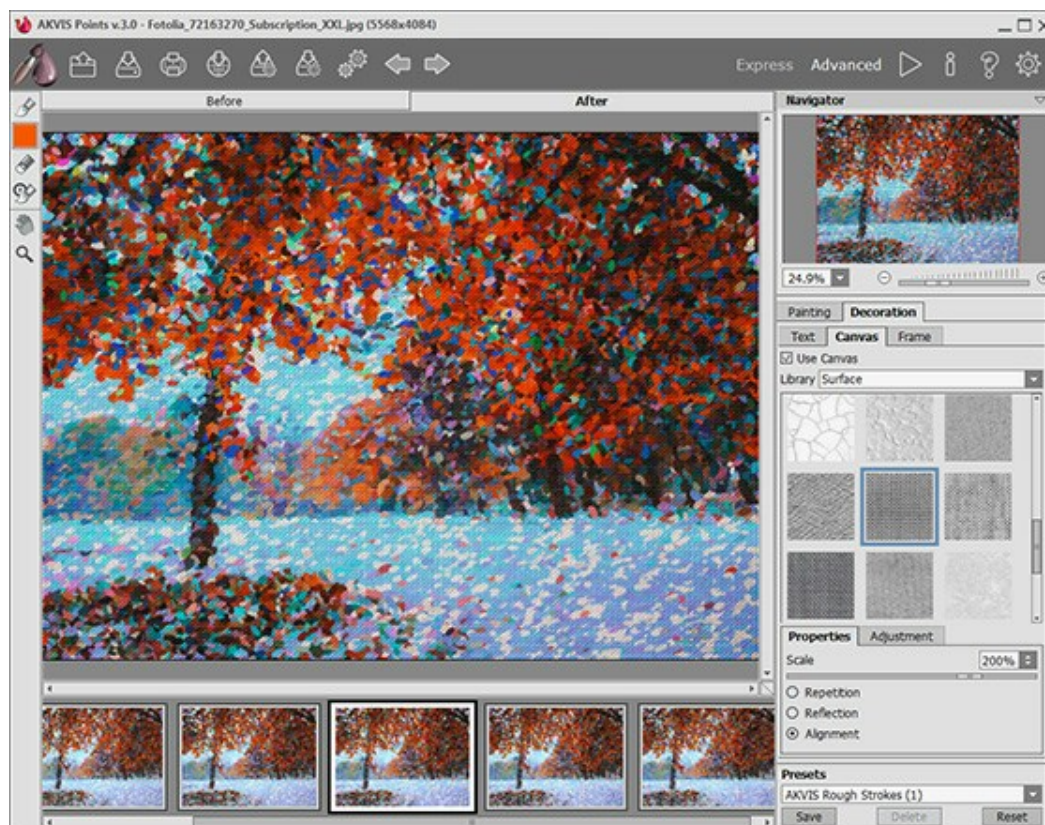
Double-clicking on the tool's icon  makes the image scale to 100% (actual size).

POINTILLISM PAINTINGS ON CANVAS

With **AKVIS Points** you can change a surface for your pointillism painting. It's possible to apply a texture of crumpled paper, brick wall, wood, or others.

In the **Decoration** group switch to the **Canvas** tab and enable the **Use Canvas** check-box.

Hint: You can drag the **Canvas/Frame/Text** tabs to change the order of the application of the decoration effects.



Pointillism Effect + Canvas

You can choose a texture from **Library -> Surface** or load your own sample: **Library -> Custom...**

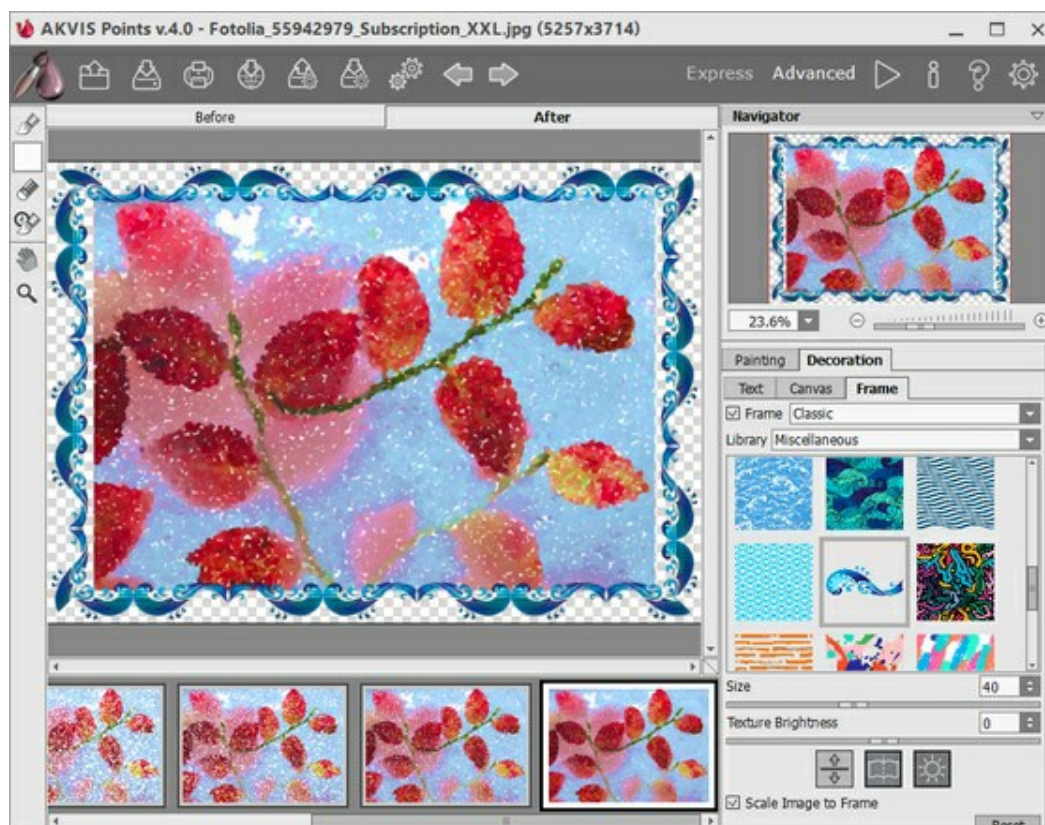
[Adjust the canvas settings.](#)

ADDING A FRAME

In **AKVIS Points** you can also add a frame to your painting to create a real work of art.

In the **Decoration** group switch to the **Frame** tab, enable the check-box of the same title, and choose the frame style and texture.

Hint: You can drag the **Canvas/Frame/Text** tabs to change the order of the application of the decoration effects.



Adding Frame

You can apply these frames to your art:

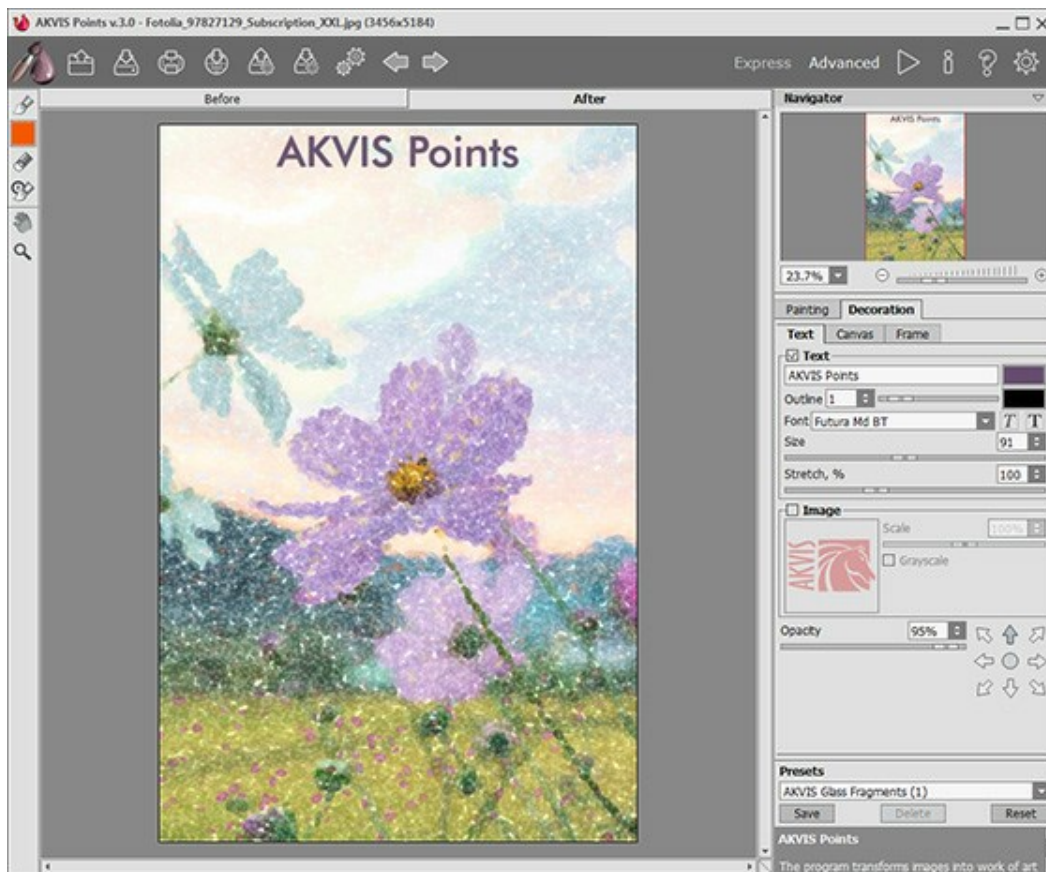
- [Classic Frame](#)
- [Pattern Frame](#)
- [Strokes](#)
- [Vignette](#)
- [Passe-Partout](#)

TEXT ON A PAINTING

In **AKVIS Points** you can add a signature, a logo or a watermark to your pointillism painting.

In the **Decoration** group switch to the **Text** tab and enable one of the modes: **Text** or **Image**.

Hint: You can drag the **Canvas/Frame/Text** tabs to change the order of the application of the decoration effects.

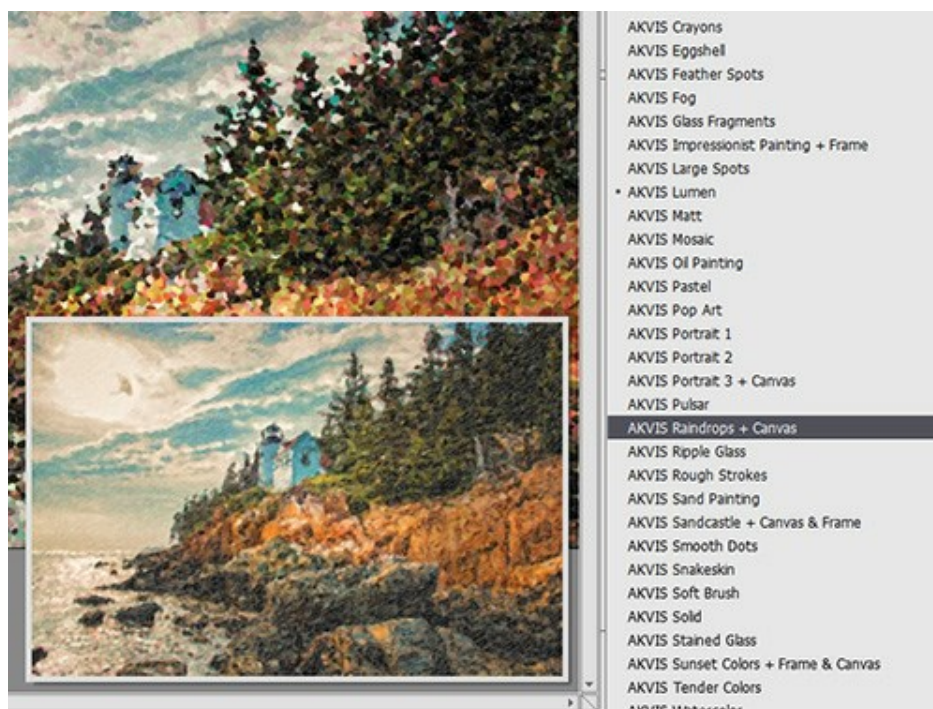


Adding Text

Adjust the text/watermark settings.

WORKING WITH PRESETS

AKVIS Points includes a number of ready to use presets (settings combinations) which help you start working. When moving a cursor over a preset in the drop-down list, the quick result appears in the small window on the left side of the list.



A preset contains the settings of all tabs.



You can apply one of the AKVIS presets or modify the parameters to achieve the desired result.

To create your own preset, type a name for the preset into the field and press **Save**.

To return to the default settings of the selected preset, press **Reset**.


To delete your preset, choose it from the drop-down list and press **Delete**.

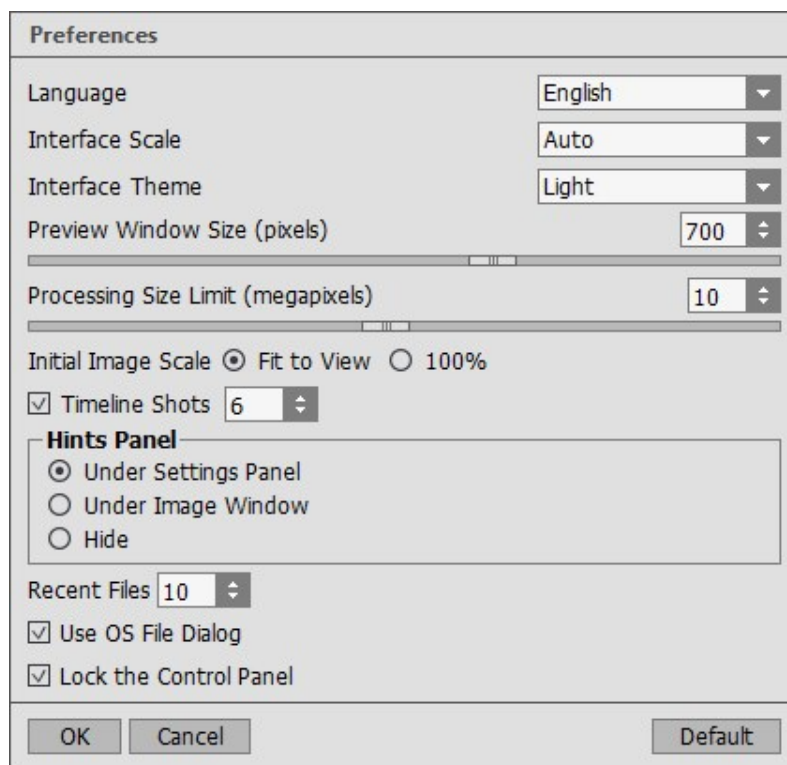
The AKVIS built-in presets cannot be removed.


You can save your presets to a **.points** file with . To load presets from the file use .

[Read more how to import and export user presets.](#)

PROGRAM PREFERENCES

The button  opens the **Preferences** dialog box that looks like this:



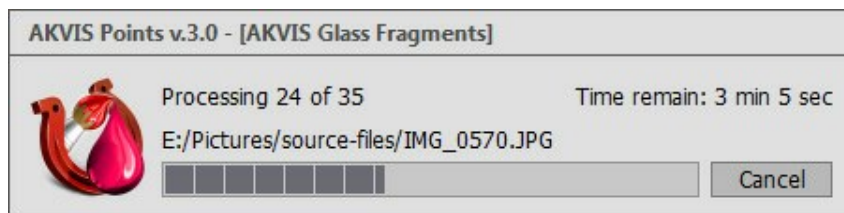
- **Language.** Change the program language by selecting another from the drop-down list.
- **Interface Scale.** Choose the size of the interface elements. When it is set to **Auto**, the program workspace will automatically scale to fit the screen resolution.
- **Interface Theme.** Select the style of the program interface: **Light**, **Gray**, or **Dark**.
- **Preview Window Size.** Choose the desired value for the size of the [quick preview window](#): from 200x200 px to 1000x1000 px.
- **Processing Size Limit.** Image processing is a very time-consuming operation. This parameter accelerates image processing by temporary reducing the size of the image to be processed. When the file size (in megapixels) does not exceed the defined value, the image is processed in the usual way. If the loaded file is larger, the program will reduce the image, process it and enlarge it again to the initial size.
- **Initial Scale.** This parameter defines the way the image is scaled in the main window after loading:
 - **Fit to View.** The scale adjusts so that the image will be completely visible;
 - **100%.** The actual size is used, the image doesn't scale.
- **Timeline Shots.** This option lets you hide/show the [Timeline](#). If the check box is enabled, you can set the number of the shots created during image processing.
- **Hints Panel.** You can choose how the hints will be shown:
 - **Under Image Window;**
 - **Under Settings Panel;**
 - **Hide.**
- **Recent Files** (available only in the standalone version). The number of recent documents. The list of the recent files, sorted by time, become visible by right mouse clicking on . Maximum: 30 files.
- **Use OS File Dialog.** Enable this option if you want to use the System Open/Save Dialog. Otherwise, the AKVIS File Dialog is used.
- **Lock the Control Panel** It disables the possibility to hide/show the top panel. If the check box is selected the panel is always visible.

To apply changes made in the **Preferences** window press **OK**.

If you need, click on the button **Default** to return to the default settings.

BATCH PROCESSING

AKVIS Points supports the **Batch Processing** feature which helps you to automatically convert a series of images with the same effect settings. It is useful when you need to create a number of paintings at the same style for a book or a blog or to convert a video into a cartoon with the pointillism technique.



If you use the standalone version of **AKVIS Points**, [read the instructions here](#).

If you use the **Points** plugin in Photoshop, [use this tutorial](#).

BATCH PROCESSING WITH PHOTOSHOP PLUGIN

The AKVIS plugins support the automation feature in **Adobe Photoshop**.

Batch processing is very useful and time saving when you have to apply the effects to a number of photos. This method applies the same settings to a folder full of images.

Even if you have never used batch processing you will find no difficulties in understanding it. First you create an **Action** in Photoshop and then apply it to a photo folder.

Follow the instructions:

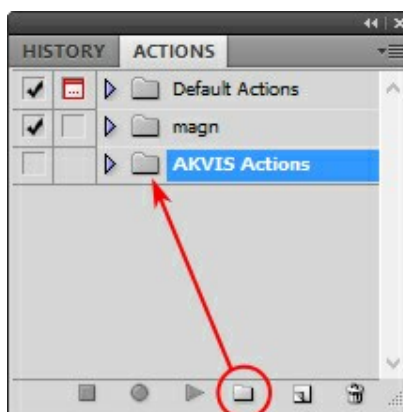
Step 1. Create two new folders, for example: "source-files" and "result-files". Place original images into the "source-files" folder. The results will be saved in the "result-files" folder.

Step 2. Open one of the original images in **Adobe Photoshop**. We will use this photo to adjust the plugin's settings and create an action.



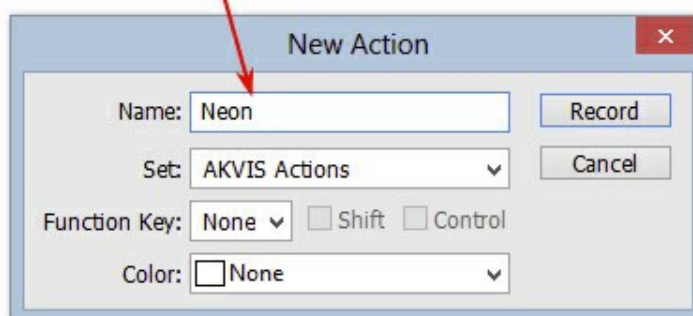
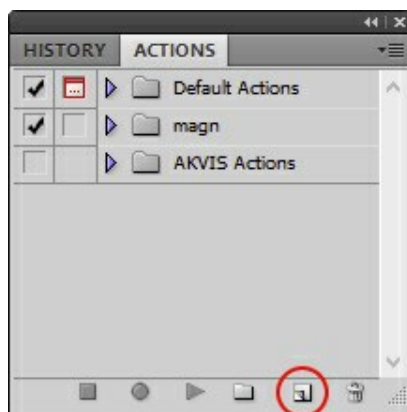
Step 3. In the **Actions** palette click **Create New Set** button. In the dialog window give a name for a new set of actions, for example, "AKVIS Actions".

If you already have a special set for the AKVIS actions, you can just choose it.



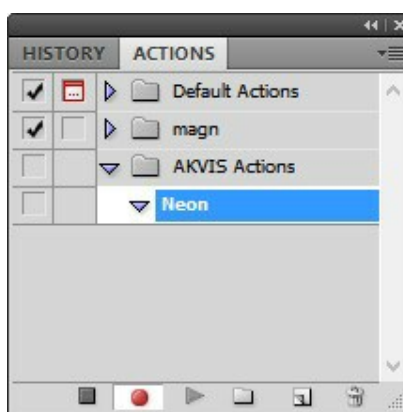
Actions Palette

Step 4. Press **Create New Action** and give a name for it, for example, "Neon".

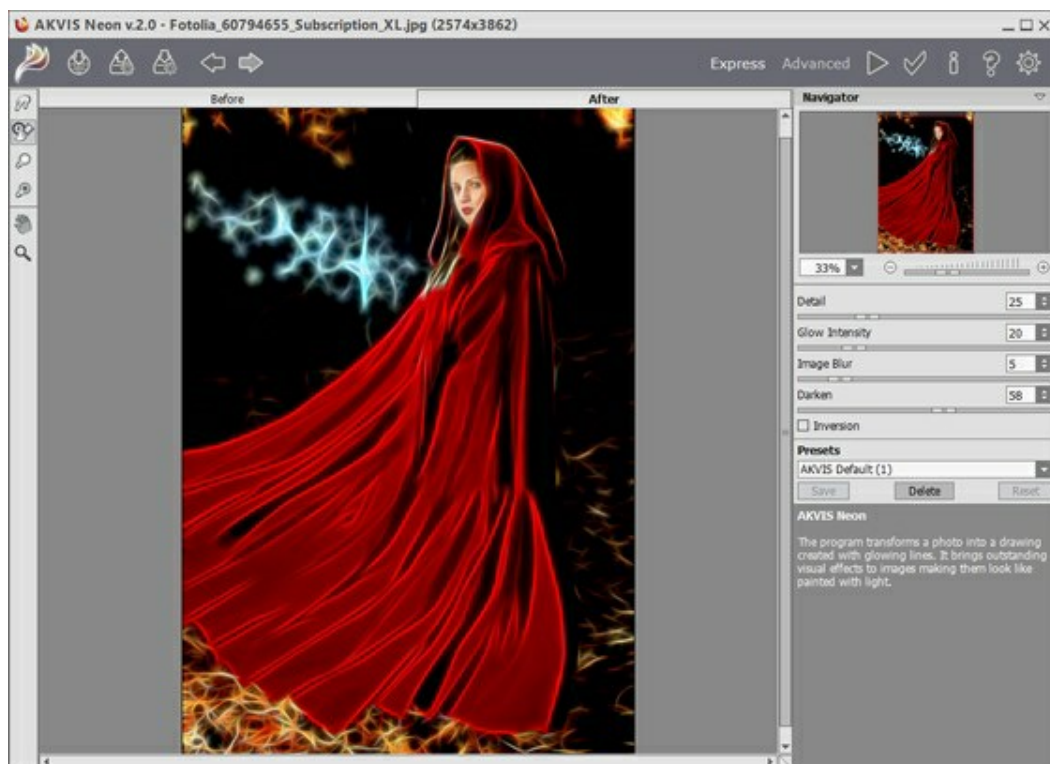



New Action

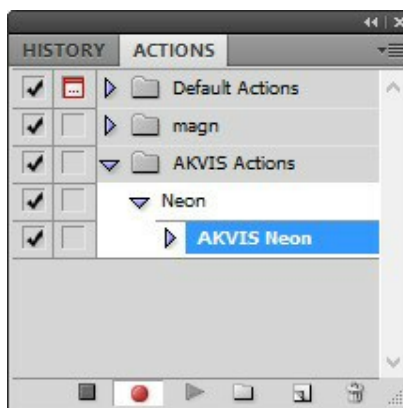
Press the **Record** button, and the recording of the action will immediately start.



Step 5. Call the plugin and adjust its parameters.

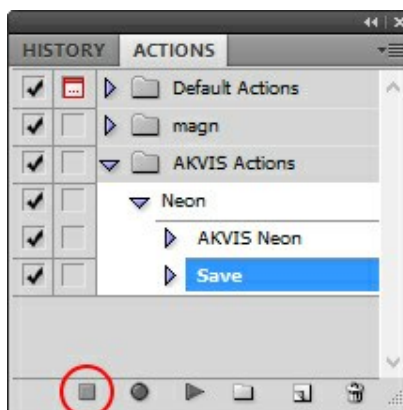


Step 6. Press the button . The plug-in window will close and the effect will be applied to the image. In the **Actions** palette, in your new action, you will see a new line with the plugin's name.



Step 7. Remember that the action is still being recorded. Now, you should save the image. Choose **Save As** in the **File** menu and save the image into the destination folder.

Step 8. Stop the action recording by pressing **Stop playing/recording** at the bottom of the **Actions** palette.



Step 9. Delete the file that you have just saved.

Step 10. The action is created and you can proceed to batch processing of the photos.

In the **File** menu of the editor choose **Automate -> Batch**.

Step 11. In the **Batch** dialog window and set the parameters:

In the **Set** drop-down list choose "AKVIS Actions" and the new action.

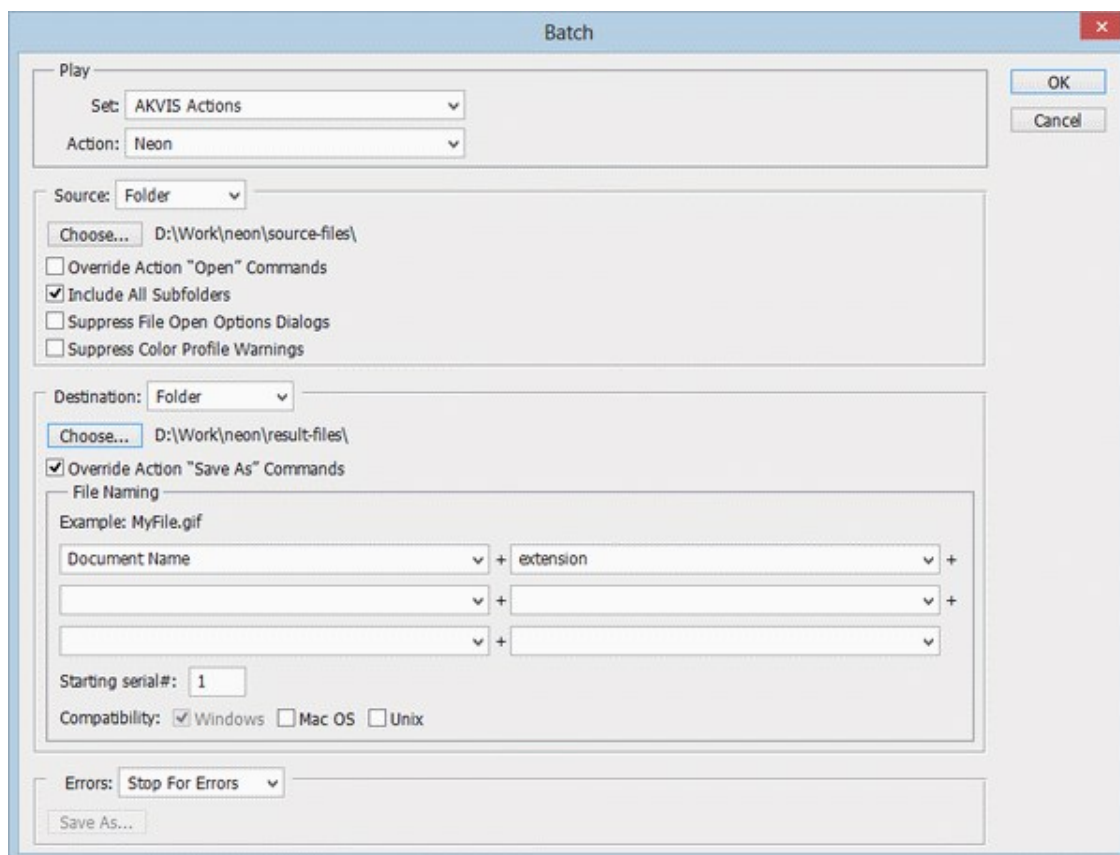
In the **Source** option set **Folder**. Press the **Choose...** button and select "source-files".

As the Open command was not recorded in the action, the **Override Action "Open" Commands** check-box should be deactivated.

For **Destination** select **Folder**, then press the **Choose...** button and select "result-files".

Activate **Override Action "Save as" Commands** check-box.


In the **File Naming** section you can create the filenames structure for the resulted images. If you do not want to change the names, in the first combo-box choose **document name**, and in the second - **extension**.



Step 12. Press **OK** to start processing. Photoshop will apply the AKVIS plugin to all photos in the "source-files" folder, one by one, and will save them to the "result-files" folder.

PRINT IMAGES IN AKVIS POINTS

In the standalone version of **AKVIS Points** you can print the image.

Press the button  to open the **Print** options.



Print Options in AKVIS Points

Adjust the parameters appearing in the Settings Panel:

Choose a printer from the list of available devices, set the desired resolution, as well as the number of copies to print.

In the **Orientation** group, set the position of paper: **Portrait** (vertically) or **Landscape** (horizontally).

Click the **Page Setup** button to open a dialog box to choose the size of the paper and its orientation, as well as the print margins.

Press the **Reset Margins** button to return the page margins to the default size.

Change the size of the printed image adjusting the parameters **Scale**, **Width**, **Height** and **Fit to Page**. These parameters have no effect on the image itself, just on the print version. You can change the size of the printed image by entering any value in %, or by entering new values in **Width** and **Height**.

To adjust the size of the image to the paper size, select **Fit to Page**.

Move the image on the page with the mouse or align it using the arrow buttons.

You can activate **Frame** for the image and adjust its width and color.

Choose the **Background Color** by clicking on the color plate.

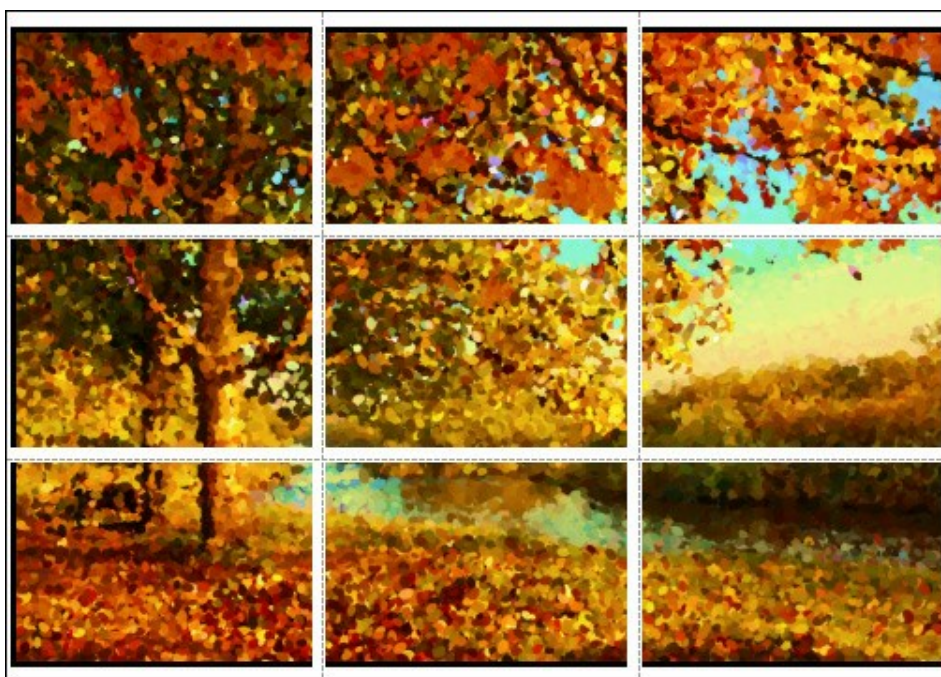
In the **Page** tab, you can adjust printing of the multiple copies of the image on a single sheet.



Print Page

- ◊ **Copies per Page.** It lets you specify the number of copies of the image on one page.
- ◊ **Horizontally** and **Vertically.** These parameters indicate the number of rows and columns for the copies of the image on the page.
- ◊ **Spacing.** The parameter sets the margins between the copies of the image.

In the **Poster** tab, it's possible to customize printing of the image on multiple pages for the subsequent junction into a large picture.



Print Poster

- ◊ **Pages.** If the check-box is enabled, you can specify the maximum number of the pages in which the image will be divided. The image scale will be adjusted to fit this number of the sheets. If the check-box is disabled, the program will automatically select the optimal number of the pages in accordance with the actual size of the image (scale = 100%).
- ◊ **Glue Margins.** If the check-box is enabled, you can adjust the width of the padding for bonding sheets. Margins will be added to the right and to the bottom of each part.
- ◊ **Lines of Cut.** Activate the check-box to display the cut marks in the margins.
- ◊ **Show Numbers.** With the enabled check-box, a sequence number of each part, by a column and a row, will be printed in the margins.

To print the image with the chosen parameters, press the **Print** button.
To cancel and close the printing options click on **Cancel**.

Click the **Properties...** button to open a system dialog box that enables you to access the advanced settings and send the document to print.

SUNNY MORNING: POINTILLISM LANDSCAPE PAINTING

The pointillism technique allows you create beautiful paintings with mosaic-like brush strokes, small dots of paint.

Using the **AKVIS Points** software you can turn your photos into spectacular works of art, and nicely decorate them with frames.

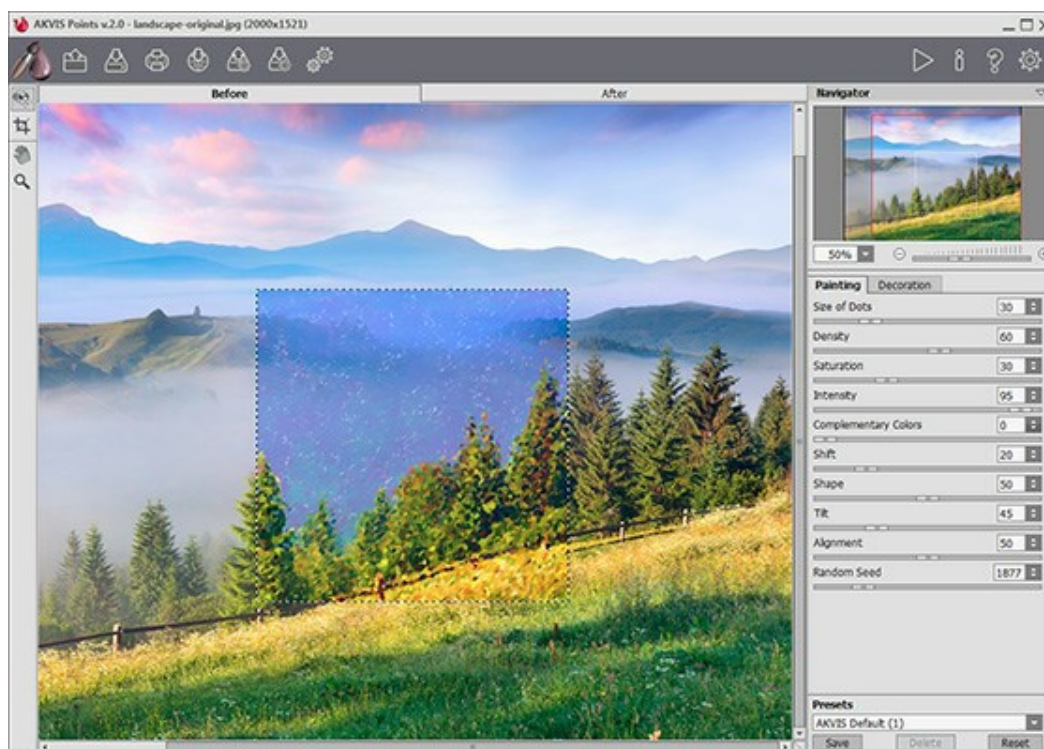


Step 1. Open the selected photo in **AKVIS Points**.

Step 2. Adjust the effect settings or select one of the ready-to-use AKVIS presets.

Hint: To obtain a more detailed and accurate picture, the points should be smaller and brighter. To make the image less photographic and more painting-like, you can increase the size of the dots.

For this photo, we configure the settings to make small dots. The quick preview window shows the approximate result.




AKVIS Points

Step 3. To strengthen the painting effect and make the image look like a real work of art, switch to the **Canvas** tab and adjust the texture settings.



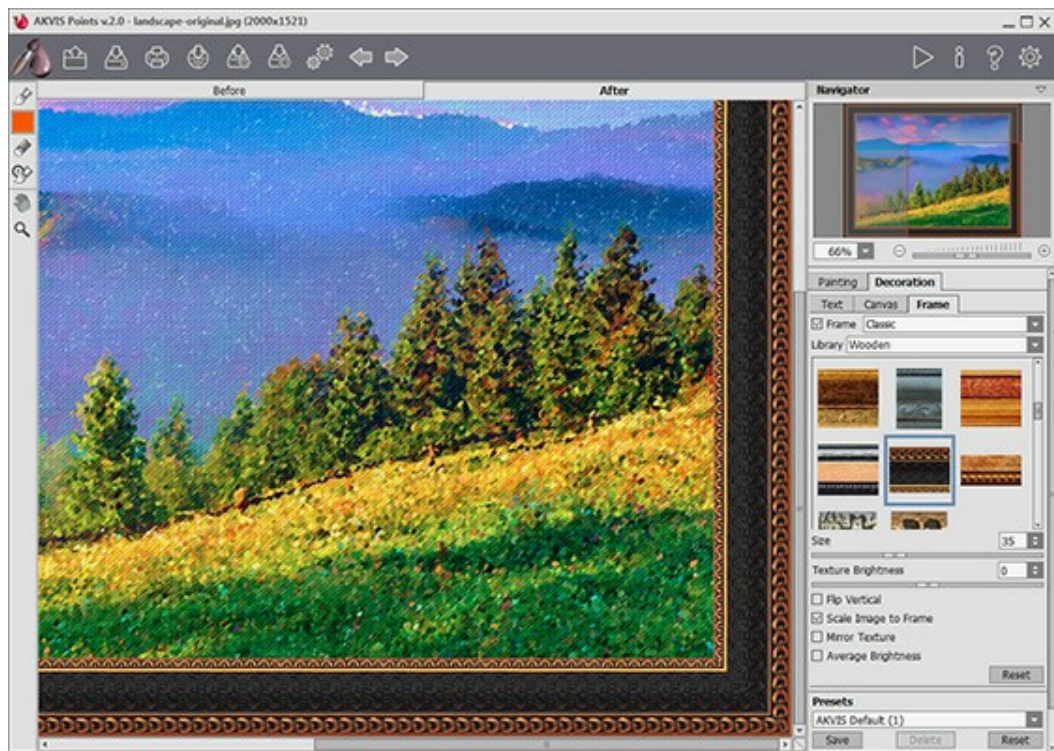
Canvas

Step 4. Process the entire image by clicking on .




Pointillism Effect

Step 5. As a finishing touch, we can add a frame to the painting.



Adding Frame

Save the result with .

Here is the final result:



Pointillism Landscape Painting
(Click on the image to see a larger copy)

One more example, this time we used large dots:

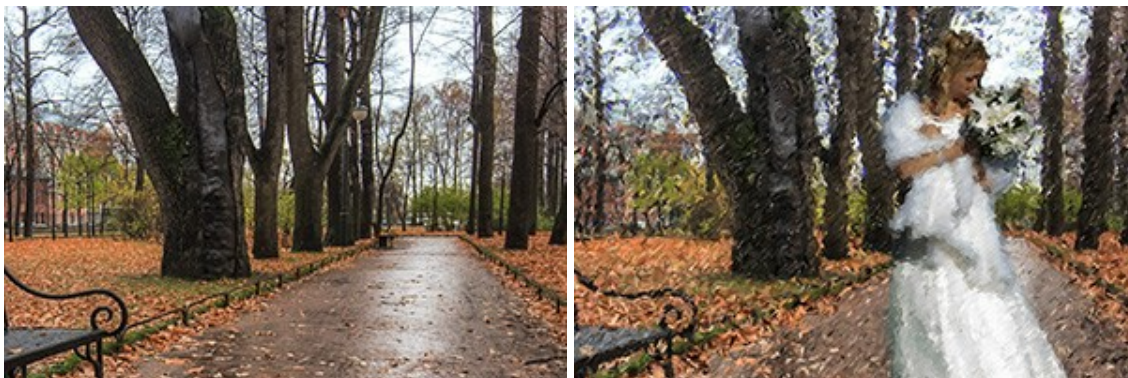


Pointillism Landscape Painting
(Click on the image to see a larger copy)

BEAUTIFUL BRIDE IN THE AUTUMN PARK

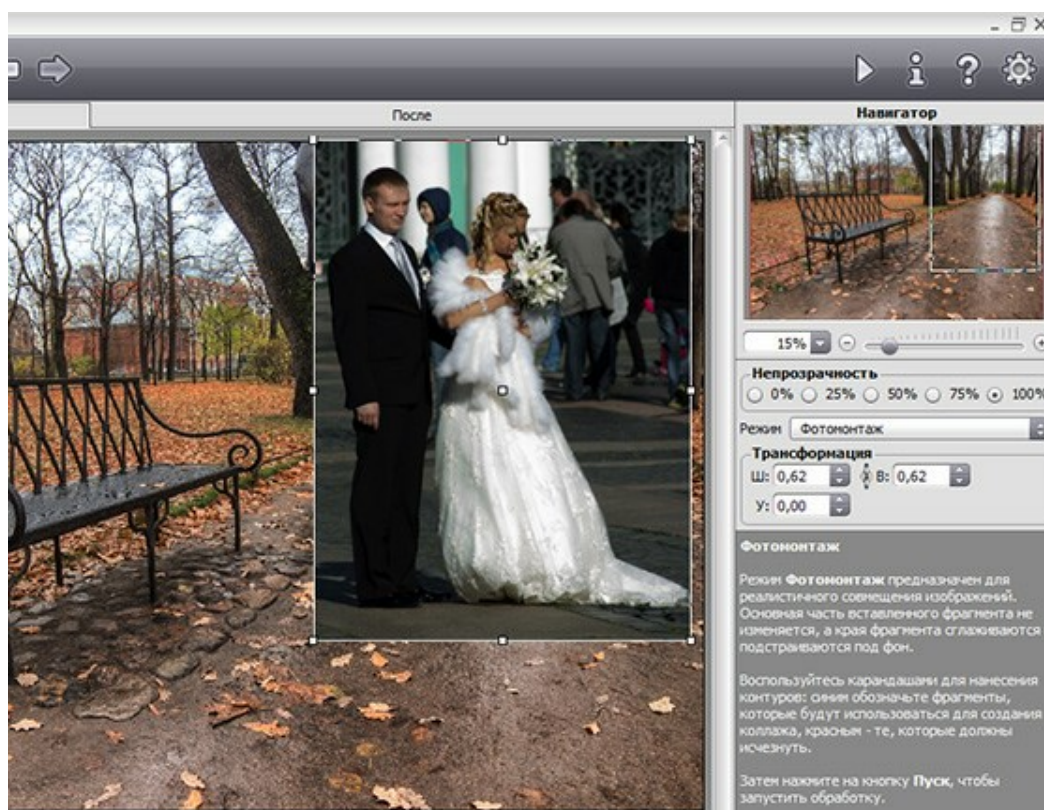
The author of the tutorial is **Alexandr Ilyin**, Russia.

Alexandr learned about the new **AKVIS Points** program and immediately wanted to look at its capabilities. He selected two images from his photo collection: a picture of a park in autumn and a portrait of a young wedding couple. He decided to combine these images into a collage and make a painting of a beautiful bride in the pointillism style.



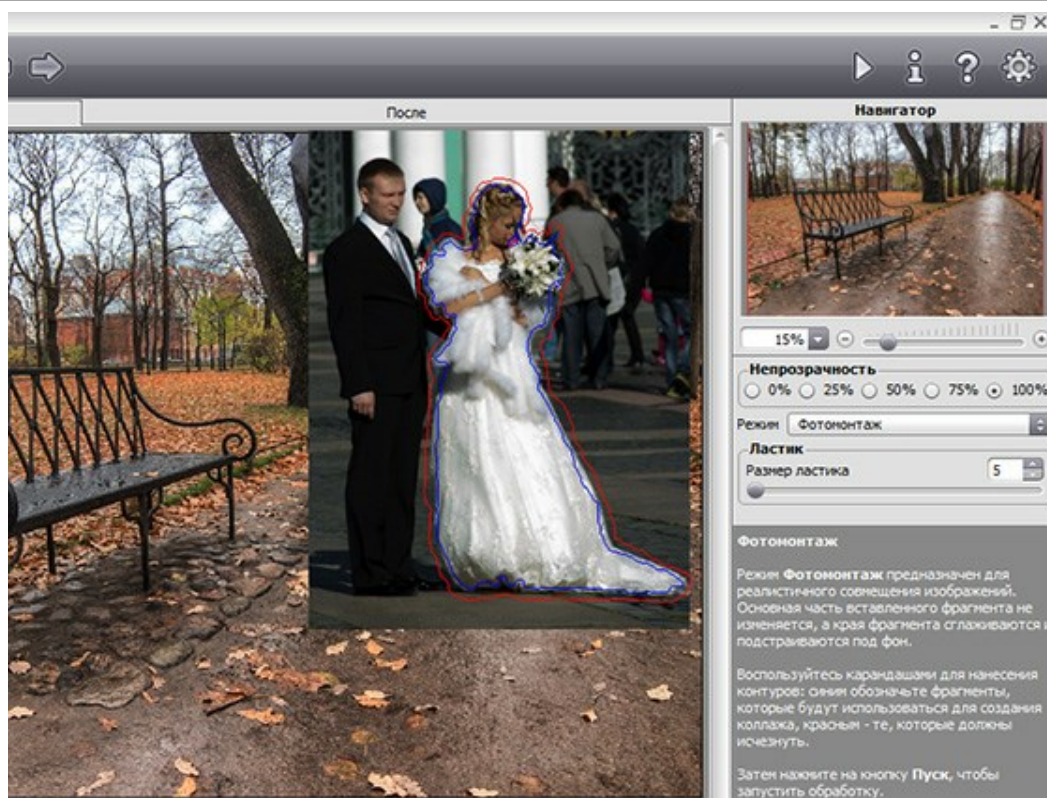
- **Step 1.** The autumn landscape photo is nice but lacks characters, and better in gorgeous costumes. Wedding photos are always inspiring and elegant. We will add a bride to the first picture to make something special.

Combine two photos in **AKVIS Chameleon**, in **Montage** mode. Open the landscape as a background and the portrait as a second image to insert.




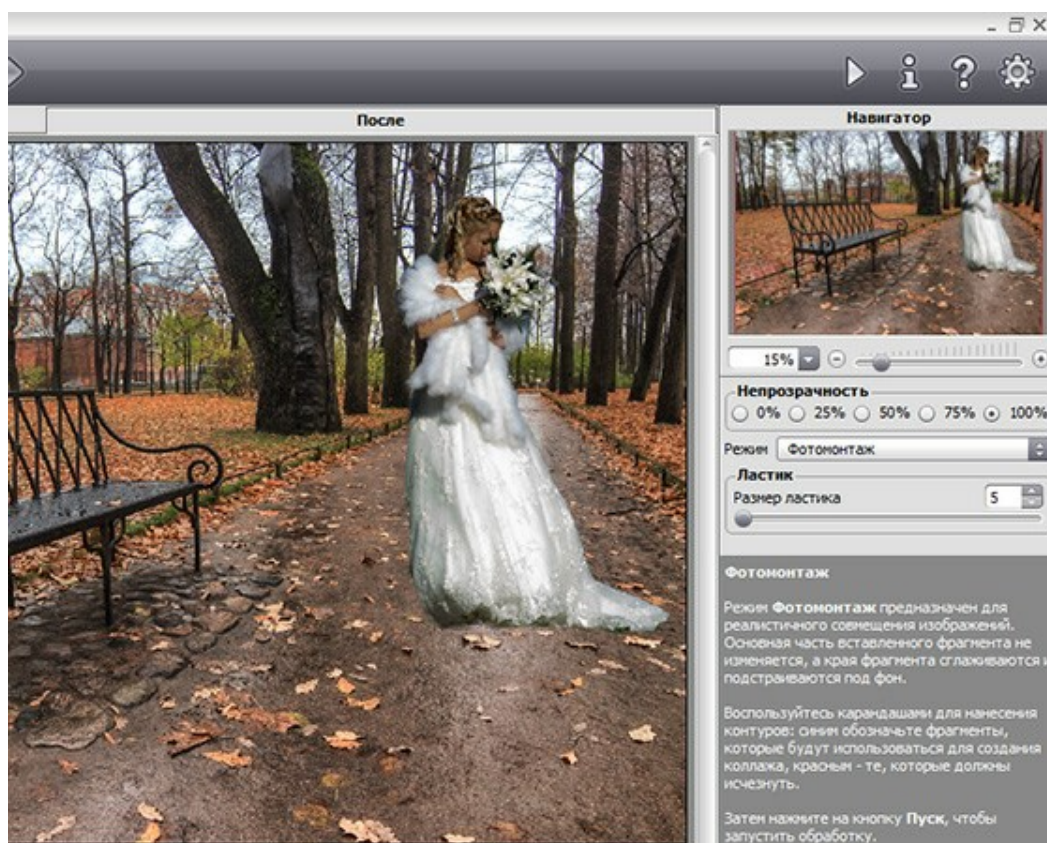
AKVIS Chameleon

Select the bride with the blue pencil and mark the other parts, to drop out, with red.



Selection

Click on  to make a collage.



Collage

- **Step 2.** Open the collage in **AKVIS Points** and adjust the effect settings.



Pointillism Painting
(Click on the image to open a large copy)

AKVIS PROGRAMS

AKVIS Sketch Video — Convert Video to Cartoon

(Windows | Mac)

AKVIS Sketch Video is an After Effects and Premiere Pro plugin for converting videos into animated cartoons, both black and white and color. Apply cartoon effects easily with the Sketch Video plugin! [More...](#)

AKVIS AirBrush — Airbrushing Techniques on Your Photos

(Windows | Mac)

AKVIS AirBrush automatically transforms a photograph into a work of art which looks like made with a special airbrush tool that sprays paints or inks. The software works as an artistic filter creating stylish colorful airbrush designs from images using chosen settings of photo-to-painting conversion. [More...](#)



AKVIS ArtSuite — Frames and Effects for Your Photos

(Windows | Mac)

AKVIS ArtSuite is an impressive collection of versatile frames and effects for photos. ArtSuite contains many templates and texture samples that can be used to create a virtually limitless variety of options for generating frames.

Decorate a photo to give it an original and festive look! [More...](#)



AKVIS ArtWork — Collection of Painting & Drawing Techniques

(Windows | Mac)

AKVIS ArtWork is photo to painting software designed to imitate different painting techniques - *Oil Painting*, *Watercolor*, *Gouache*, *Comics*, *Pen & Ink*, *Linocut*, *Pastel*. ArtWork helps you to create a piece of art out of any picture! [More...](#)



AKVIS Chameleon — Photo Collage Creation

(Windows | Mac)

AKVIS Chameleon is a fun to use tool for photo collage creation. It makes the process easy and entertaining.

The tool is very easy to handle as it does not require precise selection of objects. Using the software you can quickly create your own photo collages. [More...](#)



AKVIS Charcoal — Charcoal & Chalk Drawings

(Windows | Mac)

AKVIS Charcoal is a creative tool for conversion of photos into charcoal and chalk drawings. Using the program you can make professional-looking expressive black and white images. Playing with colors and options you can achieve outstanding artistic effects, such as sanguine and others. [More...](#)



AKVIS Coloriage — Add Color to Black and White Photos

(Windows | Mac)

AKVIS Coloriage allows colorizing B&W photos and replacing colors in color photos. Just indicate the desired colors by the stroke of the brush; the program does the rest of the work: recognizes the object's border and tailors the new color to the grayscale tones of the initial picture. [More...](#)





AKVIS Decorator — Resurface and Recolor

(Windows | Mac)

AKVIS Decorator lets you change the surface of an object in a realistic manner. The program puts on a texture keeping the volume of an object, following its folds and creases. The new pattern looks absolutely natural and makes you see things differently. Recoloring is also made easy. [More...](#)



AKVIS Draw — Hand-made Pencil Drawing Effect

(Windows | Mac)

AKVIS Draw converts your photos into hand made pencil drawings. The software creates realistic looking line art illustrations, produces both B&W and color drawings. Add a hand-drawn look to your pictures! [More...](#)

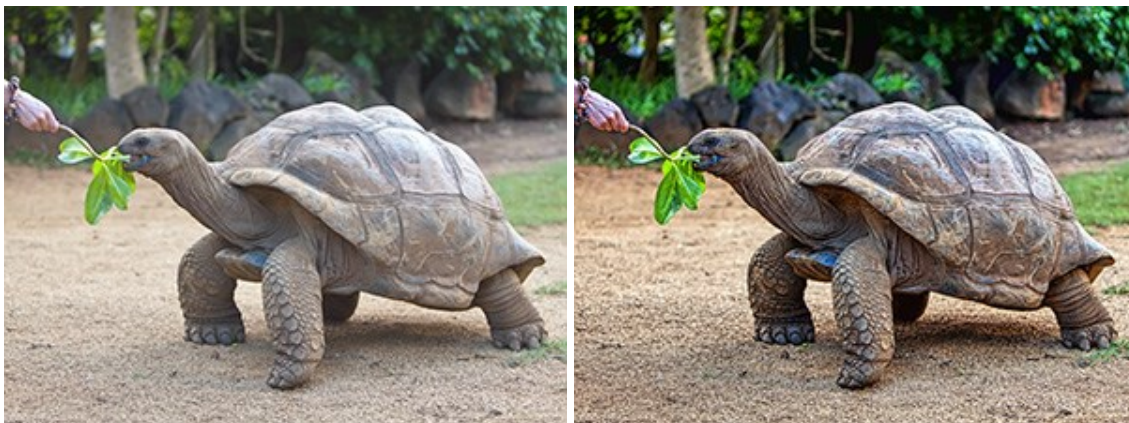


AKVIS Enhancer — Bring Detail To Your Pictures

(Windows | Mac)

AKVIS Enhancer is image enhancement software that detects detail in underexposed, overexposed and mid tone

areas of a photo with uneven exposure. Enhancer improves every part of the image! The software works in three modes: *Improve Detail*, *Prepress*, and *Tone Correction*. The program offers a fast method to fix a dark photo, add contrast and brightness to a picture, it lets you improve color and adjust tones. [More...](#)



AKVIS Frames — Decorate Your Photos with Frames

(Windows | Mac)

AKVIS Frames is free software designed for working with the [AKVIS frame packs](#). Using the program it's easy to decorate your photos with exclusive picture frames! [More...](#)



AKVIS HDRFactory — High Dynamic Range Images: Brighter than Reality!

(Windows | Mac)

AKVIS HDRFactory lets you create a High Dynamic Range image from a series of shots or from one single photo. The program can also be used for photo correction. The program brings life and color to your photos! [More...](#)



AKVIS LightShop — Light and Star Effects

(Windows | Mac)

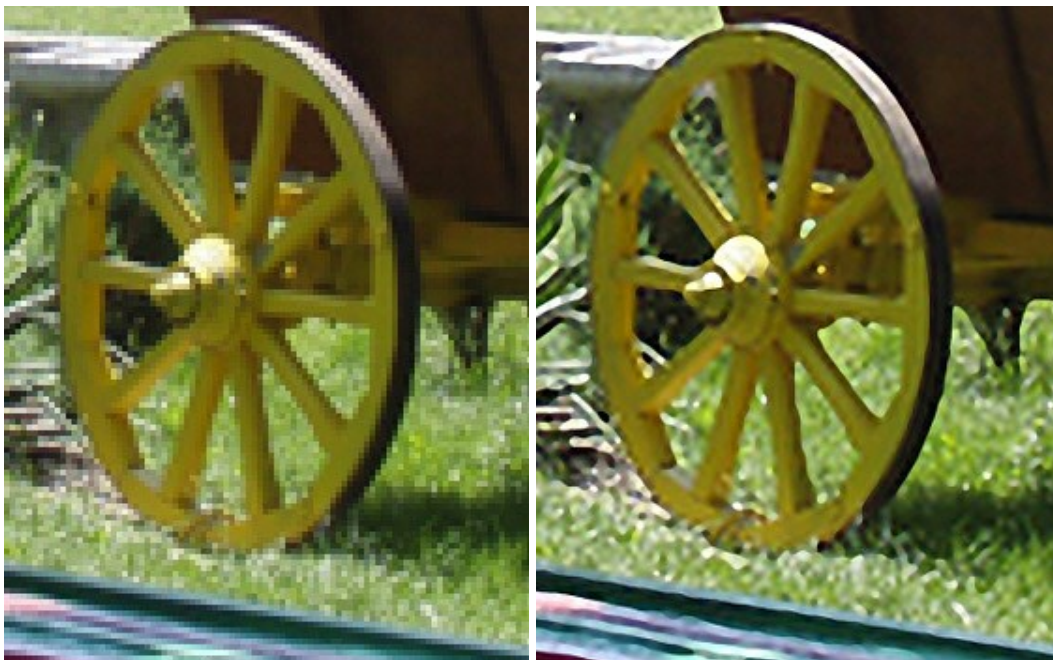
AKVIS LightShop lets you create an infinite number of astounding light effects! The program offers advanced lighting techniques for adding stars and glow effects to images. A light effect draws attention and brighten up any photo. Add a little magic to your pictures! [More...](#)



AKVIS Magnifier — Change Image Size without Quality Loss

(Windows | Mac)

AKVIS Magnifier helps to resize images without loss in quality. Whether creating poster-size images, adding resolution for printing an enlargement, or reducing image size, Magnifier will make your prints look sharper and better defined. [More...](#)



AKVIS MakeUp — Retouch Your Portrait Photos!

(Windows | Mac)

AKVIS MakeUp improves your portraits giving them a professional look. The software retouches facial imperfections making your skin radiant, beautiful, pure and even. The program adds glamour to your pictures and creates a high key effect. Look your best in every photo with AKVIS MakeUp! [More...](#)



AKVIS NatureArt — Bring Nature to Your Photos

(Windows | Mac)

AKVIS NatureArt is an excellent tool for imitating the magnificence of natural phenomena on your photos. Add dramatic nature effects to your photo, change the weather on it! With NatureArt you can become a wizard! [More...](#)



AKVIS Neon — Glowing Drawings from Photos

(Windows | Mac)

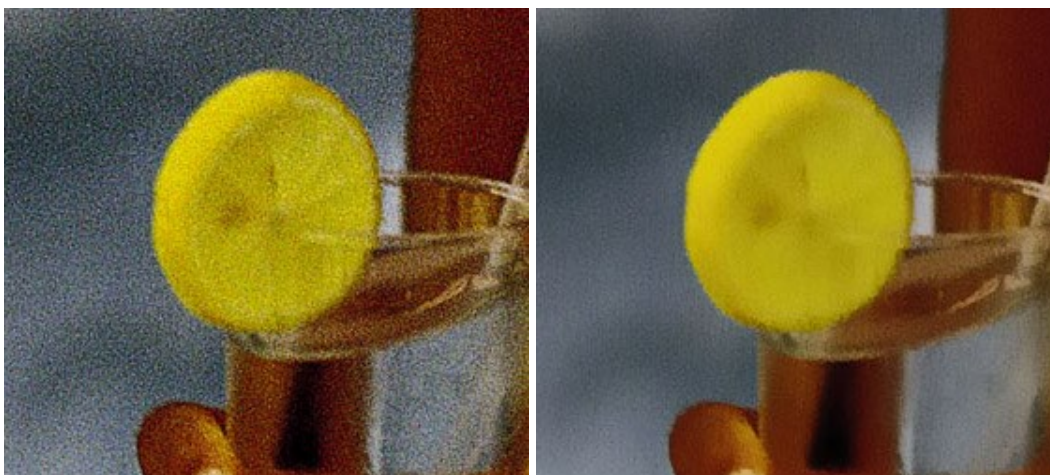
AKVIS Neon lets you create amazing glowing lines effects. The software transforms a photo into a neon image that looks like drawn with luminescent ink. [More...](#)



AKVIS Noise Buster — Digital Noise Reduction

(Windows | Mac)

AKVIS Noise Buster is software for noise suppression on digital and scanned images. Digital noise can be seen as artifacts and random red and blue pixels that compromise the smoothness of a photo. The program is efficient against both color and luminance noise. [More...](#)



AKVIS OilPaint — Oil Painting Effect

(Windows | Mac)

AKVIS OilPaint turns your photos into oil paintings. The mysterious production of a painting happens right before your eyes. The unique algorithm authentically reproduces the technique of the real brush. With this cutting-edge software you can become a painter! [More...](#)



AKVIS Pastel — Turn Photos into Pastel Paintings

(Windows | Mac)

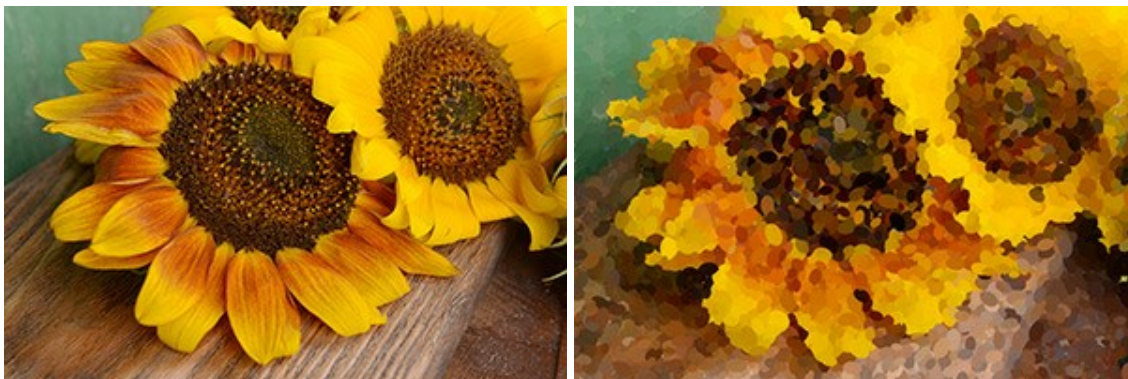
AKVIS Pastel turns your photos into pastel paintings. The program converts your photo into a lifelike digital art imitating one of the most popular artistic techniques. AKVIS Pastel is a powerful tool to unleash your creativity! [More...](#)



AKVIS Points — Apply Pointillism Effect to Your Photos

(Windows | Mac)

AKVIS Points lets you transform your photos into paintings using one of the most exciting artistic techniques - pointillism. With the software you can easily create gorgeous works of art in a pointillist manner. Discover the world of bright colors! [More...](#)



AKVIS Refocus — Focus Improvement & Blur Effects

(Windows | Mac)

AKVIS Refocus improves sharpness of out of focus images. The program can process the entire photo or bring into focus only the selected part to make the subject stand out against the background. It's also possible to add bokeh and lens blur effects to your photos.

The software works in five modes: *Refocus*, *Tilt-Shift*, *Iris Blur*, *Motion Blur*, and *Radial Blur*. [More...](#)



AKVIS Retoucher — Image Restoration Software

(Windows | Mac)

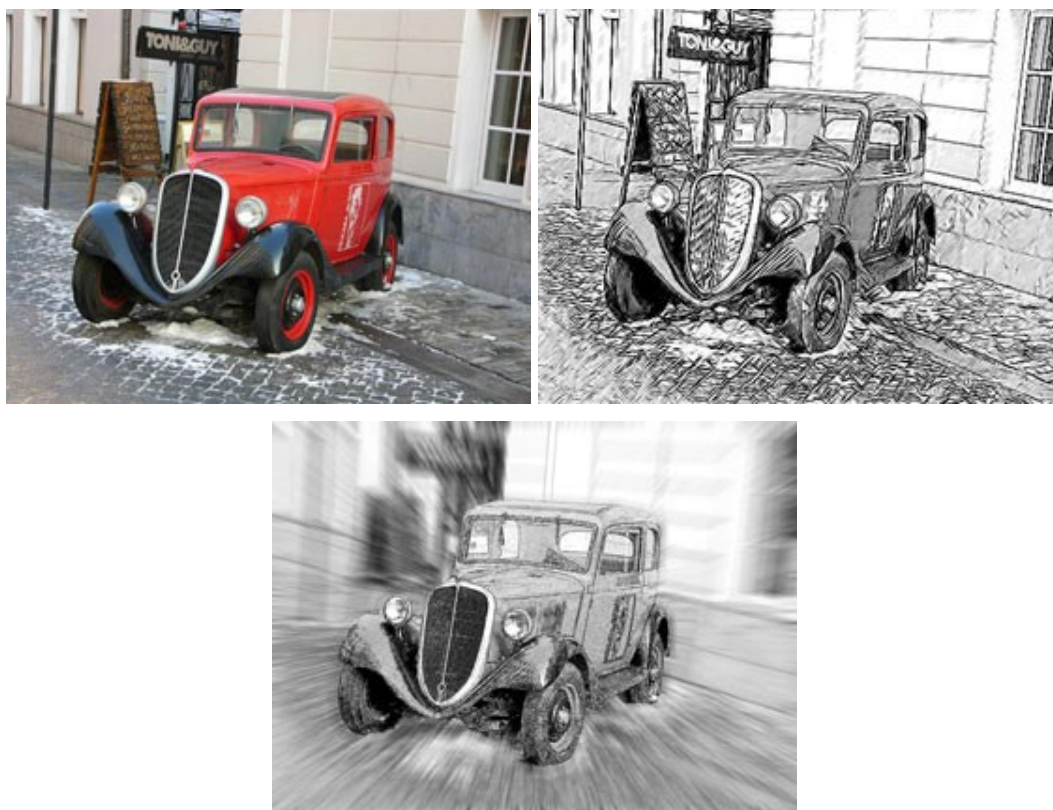
AKVIS Retoucher is an efficient program for photo restoration and photo retouching. The software removes dust, scratches, stains, and other defects that appear on damaged photos. It intelligently reconstructs the missing parts of the photo using the information of the surrounding areas. [More...](#)



AKVIS Sketch — Convert a Photo to a Pencil Sketch

(Windows | Mac)

AKVIS Sketch converts digital photos to amazing pencil sketches and watercolor drawings. Now you do not need to handle a pencil to feel like an artist. All you need to create your original work of art is good taste and AKVIS Sketch. [More...](#)



AKVIS SmartMask — Save Time on Complex Selections!

(Windows | Mac)

AKVIS SmartMask is an efficient selection tool that saves time and is fun to use. Selection has never been so simple! The software considerably increases your productivity. You will be freed from boring work and will have

more room for creativity and realization of your ideas. [More...](#)



AKVIS Watercolor — Aquarelle Art from Photos

(Windows | Mac)

AKVIS Watercolor easily makes a photo look like a brilliant and vibrant watercolor painting. The software turns ordinary images into amazingly realistic aquarelle pieces of art. [More...](#)

